

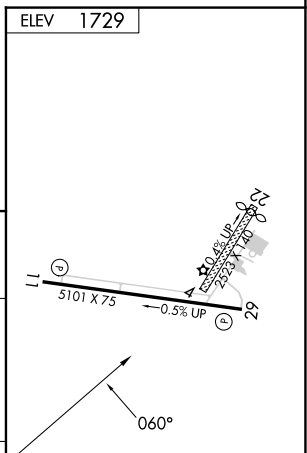
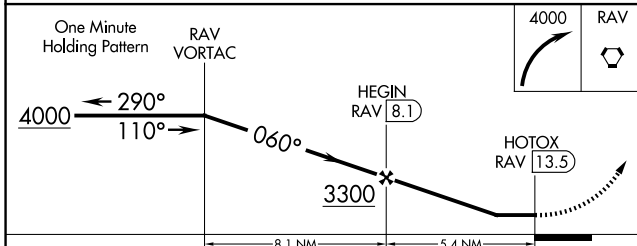
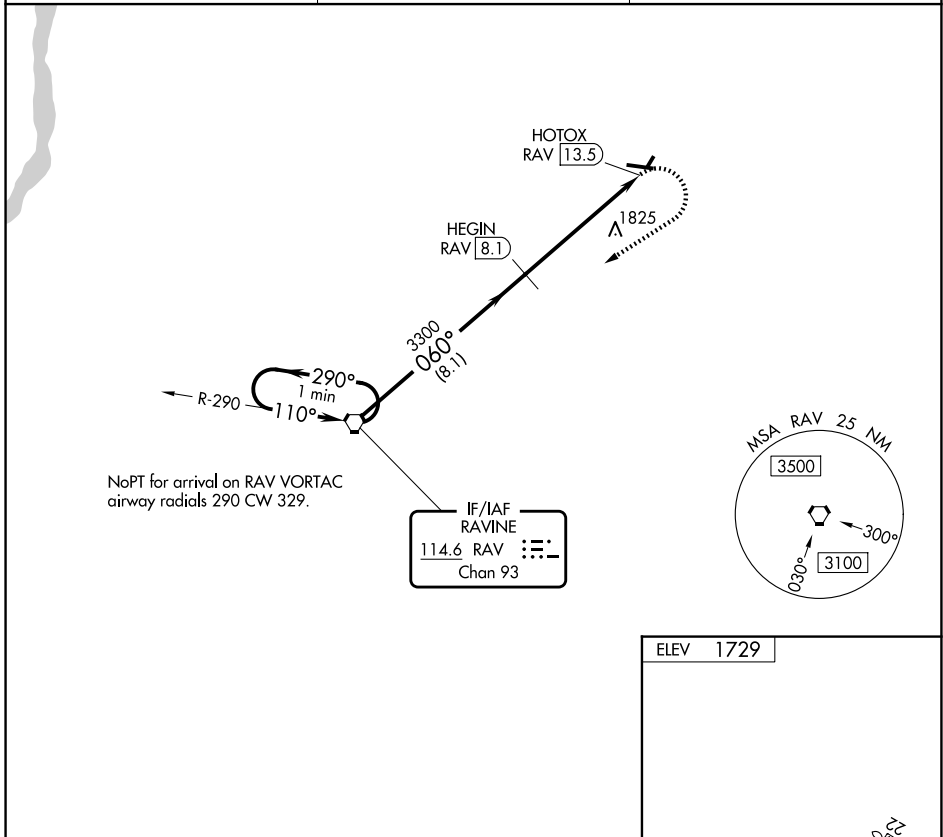
VORTAC RAV 114.6 Chan 93	APP CRS 060°	Rwy Ldg TDZE Apt Elev N/A N/A 1729
----------------------------------------------	------------------------	------------------------------------------------------------------------

VOR-A
SCHUYLKILL COUNTY/JOE ZERBEY (Z:R)

NA Circling to Rwy 4, 22 NA at night. DME required.
When local altimeter setting not received, use Penn Valley altimeter setting and increase all MDAs 280 feet and visibility Cat C and D ¾ SM.

MISSED APPROACH: Climbing right turn to 4000 direct RAV VORTAC and hold.

AWOS-3 127.575	HARRISBURG APP CON 118.25 269.45	UNICOM 123.075 (CTAF) 0
--------------------------	--------------------------------------------	-----------------------------------



CATEGORY	A	B	C	D	
CIRCLING	2160-1 431 (500-1)	2180-1 451 (500-1)	2240-1½ 511 (600-1½)	2280-2 551 (600-2)	MIRL Rwy 11-29 0 REIL Rwys 11 and 29 0

NE-4, 11 JUN 2026 to 09 JUL 2026

NE-4, 11 JUN 2026 to 09 JUL 2026