

(DAWNN1.DAWNN) 23334
DAWNN ONE DEPARTURE

AL-5438 (FAA)

INDIANAPOLIS EXEC (TYQ)
 INDIANAPOLIS, INDIANA

**TOP ALTITUDE:
 ASSIGNED BY ATC**

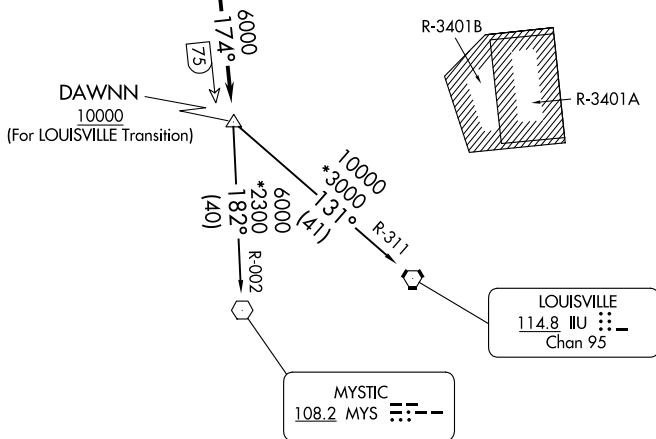
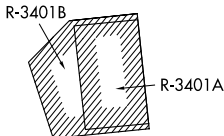
AWOS-3PT
 120.725
 INDIANAPOLIS DEP CON
 124.65 127.15 317.8

BRICKYARD
 116.3 VHP
 Chan 110

TAKEOFF MINIMUMS:
 Rwy 18, 36: Standard.

R-098
 TERRE HAUTE
 115.3 TTH
 Chan 100

R-113
 HOOSIER
 110.2 OOM
 Chan 39



- NOTE: RADAR required.
- NOTE: Select appropriate localizer/DME frequency/channel prior to departure.
- NOTE: Turbojets accelerate to 250K until reaching 10000, if unable advise ATC.
- NOTE: Assigned to aircraft with a requested altitude of 11000 or above.

(NARRATIVE ON FOLLOWING PAGE)

NOTE: Chart not to scale.

EC-2, 11 JUN 2026 to 09 JUL 2026

EC-2, 11 JUN 2026 to 09 JUL 2026



DEPARTURE ROUTE DESCRIPTION

DEPARTING ALL OTHER AUTHORIZED RUNWAYS/AIRPORTS: Climb on assigned heading to assigned altitude. Thence....

....on RADAR vectors to join VHP R-174 to DAWNN INT then on transition or assigned route. Expect clearance to requested altitude ten minutes after departure.

LOUISVILLE TRANSITION (DAWNN1.IIU): From over DAWNN INT on IIU R-311 to IIU VORTAC.

MYSTIC TRANSITION (DAWNN1.MYS): From over DAWNN INT on MYS R-002 to MYS VOR.

EC-2, 11 JUN 2026 to 09 JUL 2026

EC-2, 11 JUN 2026 to 09 JUL 2026