

| | | | |
|--|------------------------|-----------------------------|---|
| WAAS CH 99619 W16A | APP CRS 159° | Rwy Ldg TDZE Apt Elev | 6501 1999 1999 |
|--|------------------------|-----------------------------|---|

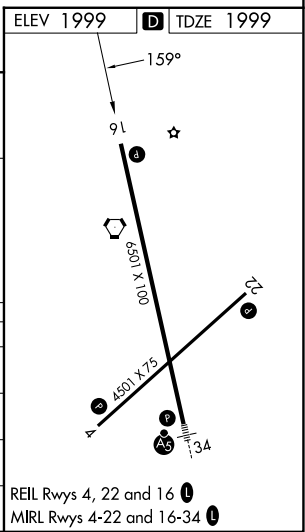
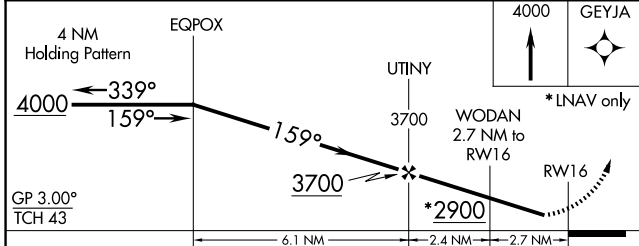
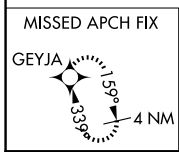
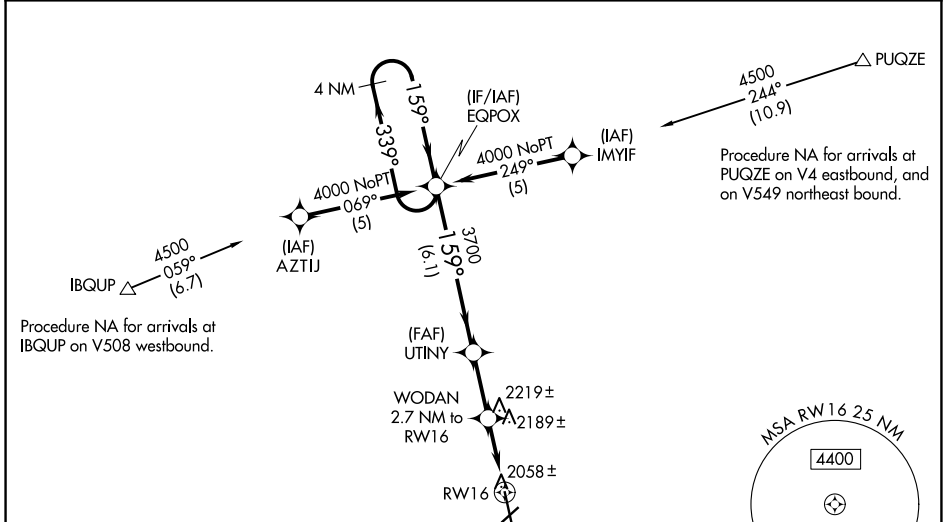
RNAV (GPS) RWY 16

HAYS RGNL (HYS)

⚠ For uncompensated Baro-VNAV systems, LNAV/VNAV NA below -18°C (0°F) or above 45°C (113°F).
⚠ DME/DME RNP-0.3 NA. Visibility reduction by helicopters NA. When local altimeter setting not received, use Russell altimeter setting: increase LPV DA to 2318 feet; increase LNAV/VNAV DA to 2445 feet and visibility all Cats ½ SM; increase all MDA 80 feet and visibility LNAV and Circling Cat C and D ¼ SM. Baro-VNAV NA when using Russell altimeter setting. Circling NA for Cat D northwest of Rwy 4 and west of Rwy 16.

MISSED APPROACH: Climb to 4000 direct GEYJA and hold.

| | | |
|----------------------------|--|---------------------------------|
| AWOS-3PT 125.525 | KANSAS CITY CENTER 124.4 322.4 | UNICOM 122.8 (CTAF) 0 |
|----------------------------|--|---------------------------------|



| CATEGORY | A | B | C | D |
|--------------|--------|-------------|-------------------------|-------------------------|
| LPV DA | | 2249-1 | 250 (300-1) | |
| LNAV/VNAV DA | | 2308-1 | 309 (400-1) | |
| LNAV MDA | 2440-1 | 441 (500-1) | 2440-1¼ 441 (500-1¼) | 2440-1½ 441 (500-1½) |
| CIRCLING | 2480-1 | 481 (500-1) | 2560-1½ 561 (600-1½) | 2680-2¼ 681 (700-2¼) |

NC-2, 11 JUN 2026 to 09 JUL 2026

NC-2, 11 JUN 2026 to 09 JUL 2026