

WAAS CH <b>50519</b> <b>W22A</b>	APP CRS <b>220°</b>	Rwy Ldg TDZE Apt Elev	<b>4500</b> <b>1990</b> <b>1999</b>
--	------------------------	-----------------------------	---

# RNAV (GPS) RWY 22

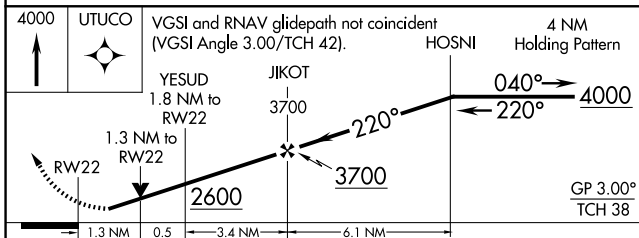
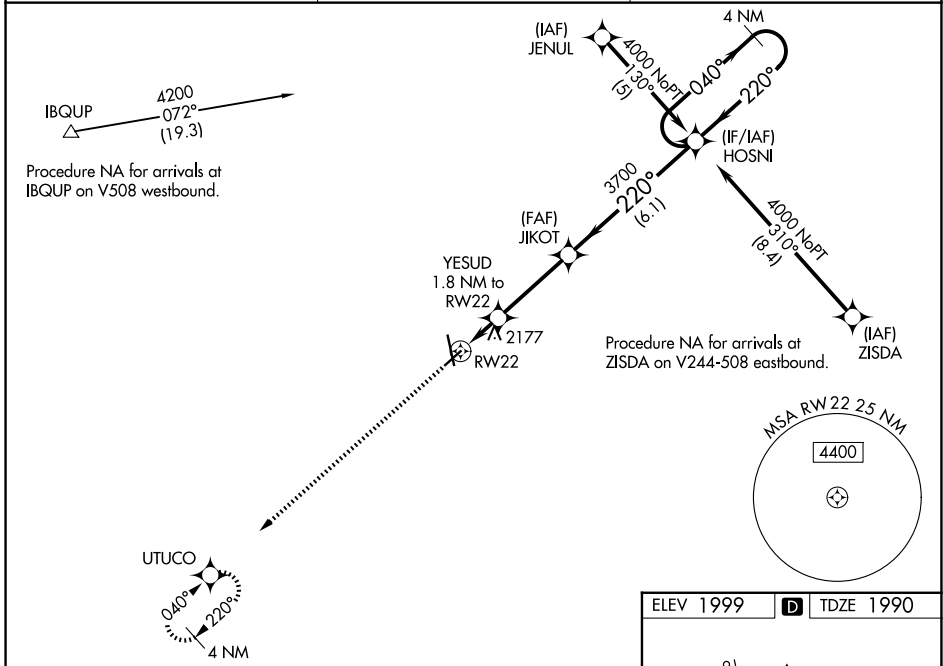
HAYS RGNL (HYS)

RNP APCH-GPS.

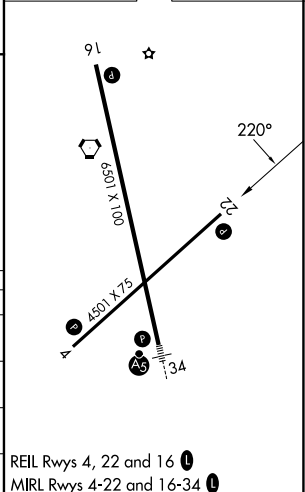
▼ For uncompensated Baro-VNAV systems, LNAV/VNAV NA below -18°C or above 45°C.  
 ▲ Rwy 22 helicopter visibility reduction below ¼ SM NA. When local altimeter setting not received, use Russell altimeter setting: increase LPV DA to 2309 feet and visibility all Cats ¼ SM; increase LNAV/VNAV DA to 2545 feet and visibility all Cats ¼ SM; increase all MDA 80 feet and visibility LNAV and Circling Cat C and D ¼ SM. Circling NA for Cat D northwest of Rwy 4 and west of Rwy 16. VDP and Baro-VNAV NA when using Russell altimeter setting.

MISSED APPROACH:  
Climb to 4000 direct  
UTUCO and hold.

AWOS-3PT <b>125,525</b>	KANSAS CITY CENTER <b>124.4 322.4</b>	UNICOM <b>122.8 (CTAF) 1</b>
----------------------------	--	---------------------------------



ELEV 1999	<b>D</b>	TDZE 1990
-----------	----------	-----------



CATEGORY	A	B	C	D
LPV DA	2240-1 250 (300-1)			
LNAV/VNAV DA	2476-1¾ 486 (500-1¾)			
LNAV MDA	2440-1 450 (500-1)	2440-1¼ 450 (500-1¼)	2440-1½ 450 (500-1½)	
CIRCLING	2480-1 481 (500-1)	2560-1½ 561 (600-1½)	2680-2¼ 681 (700-2¼)	

NC-2, 11 JUN 2026 to 09 JUL 2026

NC-2, 11 JUN 2026 to 09 JUL 2026