

WAAS CH 90519 W04A	APP CRS 040°	Rwy Ldg TDZE Apt Elev	4500 1990 1999
---------------------------------	------------------------	-----------------------------	---

RNAV (GPS) RWY 4

HAYS RGNL (HYS)

RNP APCH - GPS.

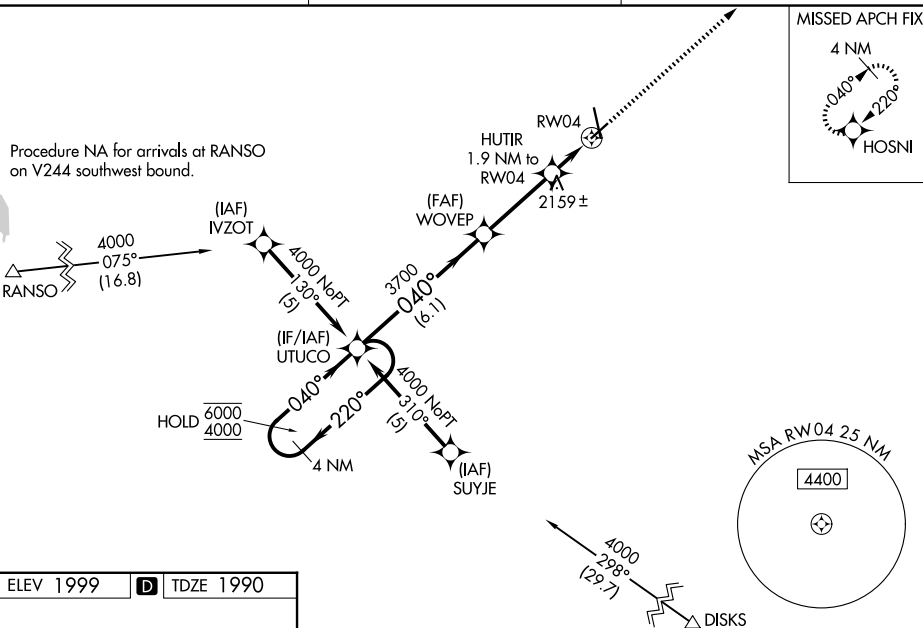
⚠ For uncompensated Baro-VNAV systems, LNAV/VNAV NA below -18°C or above 54°C. Baro-VNAV and VDP NA when using RSL altimeter setting. When local altimeter setting not received, use RSL altimeter setting; increase LPV DA to 2309 feet; increase LNAV/VNAV DA to 2459 feet and visibility all Cats ¼ SM; increase all MDA 80 feet and LNAV visibility Cat C/D ¼ SM, and Circling visibility Cat C/D ¼ SM. Circling NA for Cat D northwest of Rwy 4 and west of Rwy 16.

MISSED APPROACH: Climb to 4000 direct HOSNI and hold.

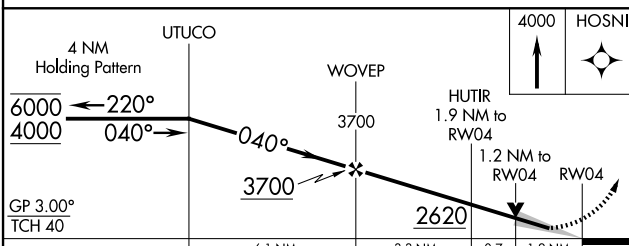
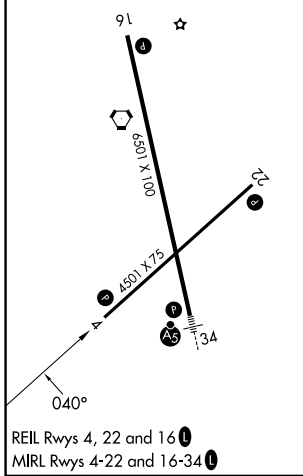
AWOS-3PT
125.525

KANSAS CITY CENTER
124.4 322.4

UNICOM
122.8 (CTAF) 0



ELEV 1999	D	TDZE 1990
-----------	----------	-----------



CATEGORY	A	B	C	D
LPV DA	2240-1 250 (300-1)			
LNAV/VNAV DA	2390-1½ 400 (400-1½)			
LNAV MDA	2420-1	430 (500-1)	2420-1¼ 430 (500-1¼)	2420-1½ 430 (500-1½)
CIRCLING	2480-1	481 (500-1)	2560-1½ 561 (600-1½)	2680-2¼ 681 (700-2¼)

NC-2, 11 JUN 2026 to 09 JUL 2026

NC-2, 11 JUN 2026 to 09 JUL 2026