

WAAS CH <b>60934</b> <b>W36A</b>	APP CRS <b>004°</b>	Rwy Ldg TDZE Apt Elev	<b>3800</b> <b>832</b> <b>835</b>
--	------------------------	-----------------------------	---

# RNAV (GPS) RWY 36

DUPONT/LAPEER (D95)

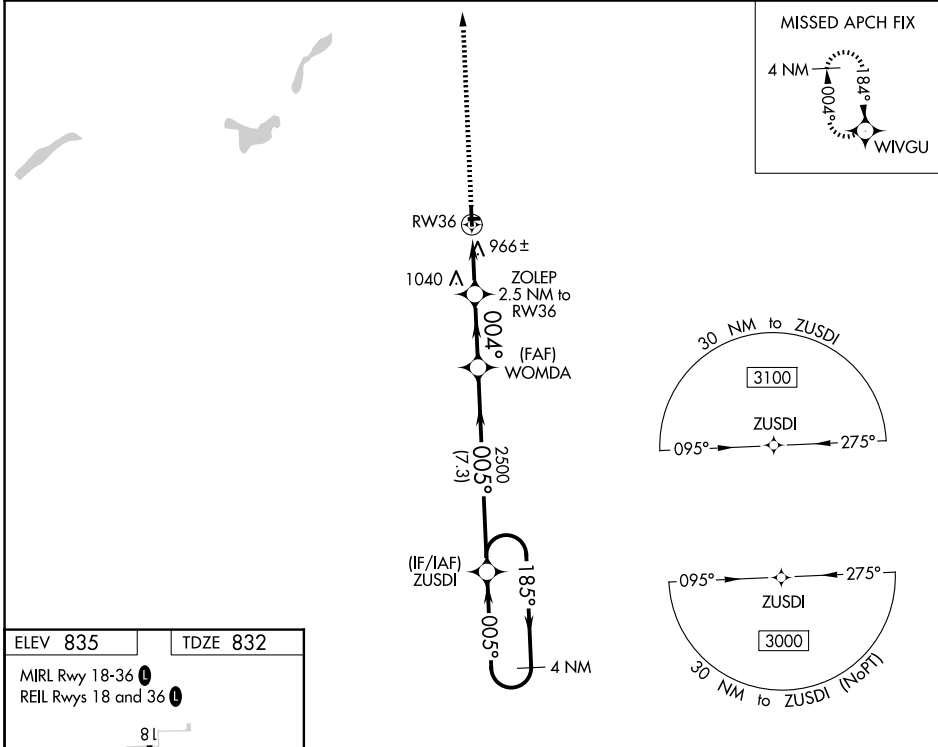
**▽** DME/DME RNP-0.3 NA. Helicopter visibility reduction below ¾ SM NA. When local altimeter setting not received, use Flint altimeter setting and increase all MDA 60 feet and increase LNAV Cat C visibility ½ mile and LP Cat C and Circling Cat C visibility ¼ mile. Circling NA to Rwy 9 and 27.

**MISSED APPROACH:**  
Climb to 3000 direct WIVGU and hold.

AWOS-3P  
**134.050**

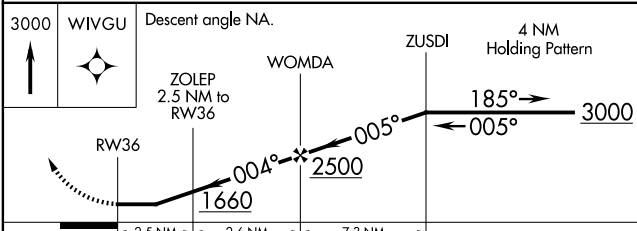
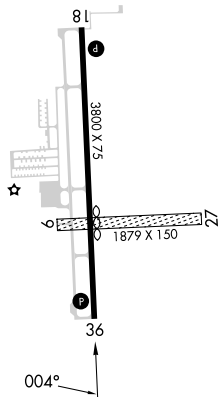
GREAT LAKES APP CON ★  
**118.8 257.9**

UNICOM  
**123.0 (CTAF) 0**



ELEV 835 TDZE 832

MIRL Rwy 18-36  
REIL Rwy 18 and 36



CATEGORY	A	B	C	D
LP MDA	1220-1	388 (400-1)	1220-1½ 388 (400-1½)	NA
LNAV MDA	1260-1	428 (500-1)	1260-1¼ 428 (500-1¼)	NA
CIRCLING	1300-1 465 (500-1)	1380-1 545 (600-1)	1460-1¾ 625 (700-1¾)	NA

EC-1, 11 JUN 2026 to 09 JUL 2026

EC-1, 11 JUN 2026 to 09 JUL 2026