

VORTAC FNT <b>116.9</b> Chan <b>116</b>	APP CRS <b>080°</b>	Rwy Ldg TDZE Apt Elev <b>N/A</b> <b>N/A</b> <b>835</b>
---	------------------------	---

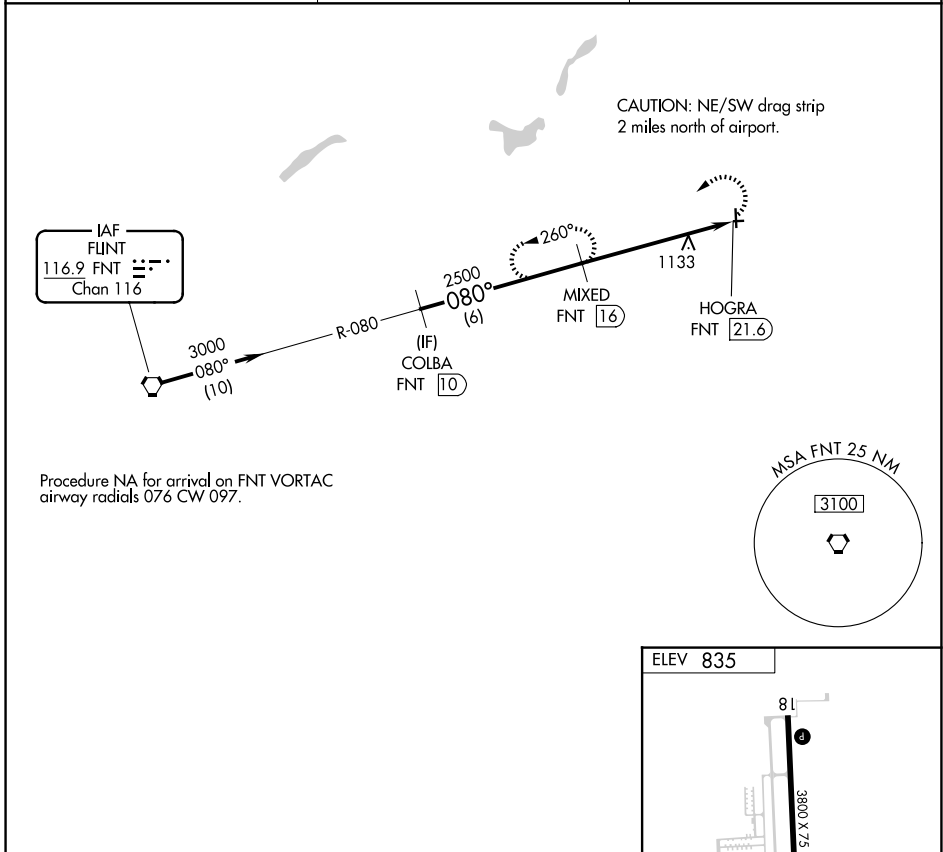
**VOR-A**  
DUPONT/LAPEER (D95)

DME required.

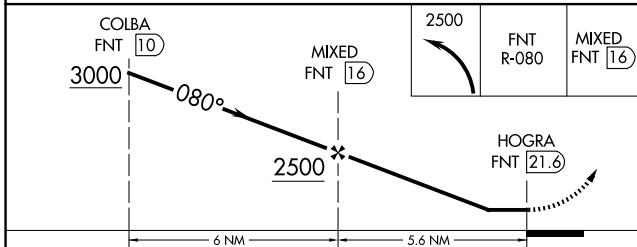
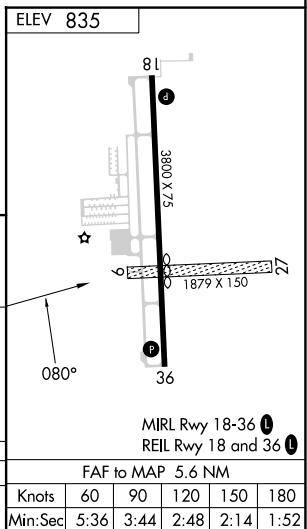
▼ Circling NA to Rwy 9 and 27. Circling Rwy 18 NA at night. Rwy 18 helicopter visibility reduction below 1 SM NA.

MISSED APPROACH: Climbing left turn to 2500 on FNT VORTAC R-080 to MIXED 16 DME and hold.

AWOS-3P <b>134.050</b>	GREAT LAKES APP CON ★ <b>118.8 257.9</b>	UNICOM <b>123.0</b> (CTAF) <b>0</b>
---------------------------	---	--



Procedure NA for arrival on FNT VORTAC  
airway radials 076 CW 097.



CATEGORY	A	B	C	D	FAF to MAP 5.6 NM					
CIRCLING	1400-1	565 (600-1)	1460-1¾ 625 (700-1¾)	NA	Knots	60	90	120	150	180
					Min:Sec	5:36	3:44	2:48	2:14	1:52

EC-1, 11 JUN 2026 to 09 JUL 2026

EC-1, 11 JUN 2026 to 09 JUL 2026