

APP CRS	Rwy Ldg	4440
146°	TDZE	721
	Apt Elev	742

RNAV (GPS) RWY 15

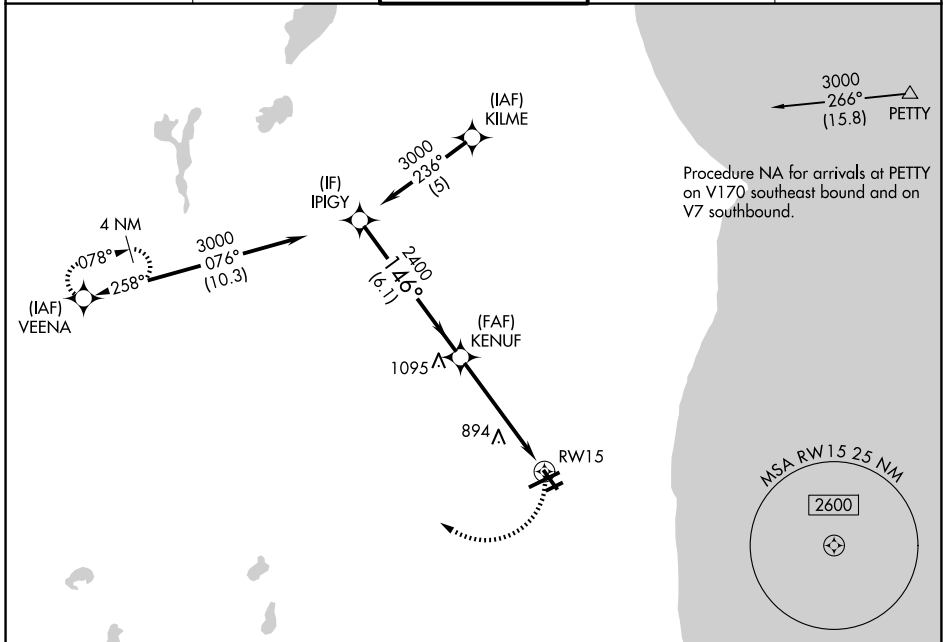
KENOSHA RGNL (ENW)

RNP APCH.

▼ Rwy 15 helicopter visibility reduction below 1 SM NA. Straight-In and Circling Rwy 15 NA at night, Circling Rwy 7R NA at night.

MISSED APPROACH:
Climbing right turn to 3000 direct VEENA and hold.

ATIS 127.175	MILWAUKEE APP CON 135.875 317.725	KENOSHA TOWER ★ 118.6 (CTAF) 353.6	GND CON 121.875	UNICOM 122.95
------------------------	---	---	---------------------------	-------------------------



EC-3, 11 JUN 2026 to 09 JUL 2026

EC-3, 11 JUN 2026 to 09 JUL 2026

ELEV 742	TDZE 721
----------	----------

Visual Segment - Obstacles.		3000	VEENA
-----------------------------	--	------	-------

	6.1 NM		5.1 NM	
CATEGORY	A	B	C	D
LNNAV MDA	1200-1	479 (500-1)	1200-1 $\frac{3}{8}$ 479 (500-1 $\frac{3}{8}$)	1200-1 $\frac{1}{2}$ 479 (500-1 $\frac{1}{2}$)
CIRCLING	1200-1 458 (500-1)	1340-1 598 (600-1)	1400-1 $\frac{3}{4}$ 658 (700-1 $\frac{3}{4}$)	1440-2 $\frac{1}{4}$ 698 (700-2 $\frac{1}{4}$)

MIRL Rwy 7R-25L **1**
HIRL Rwys 7L-25R and 15-33 **1**
REIL Rwy 25R **1**

RNAV (GPS) RWY 15