

RNAV-1 DME/DME/IRU or GPS.

RADAR required.

TOP ALTITUDE:
ASSIGNED BY ATC

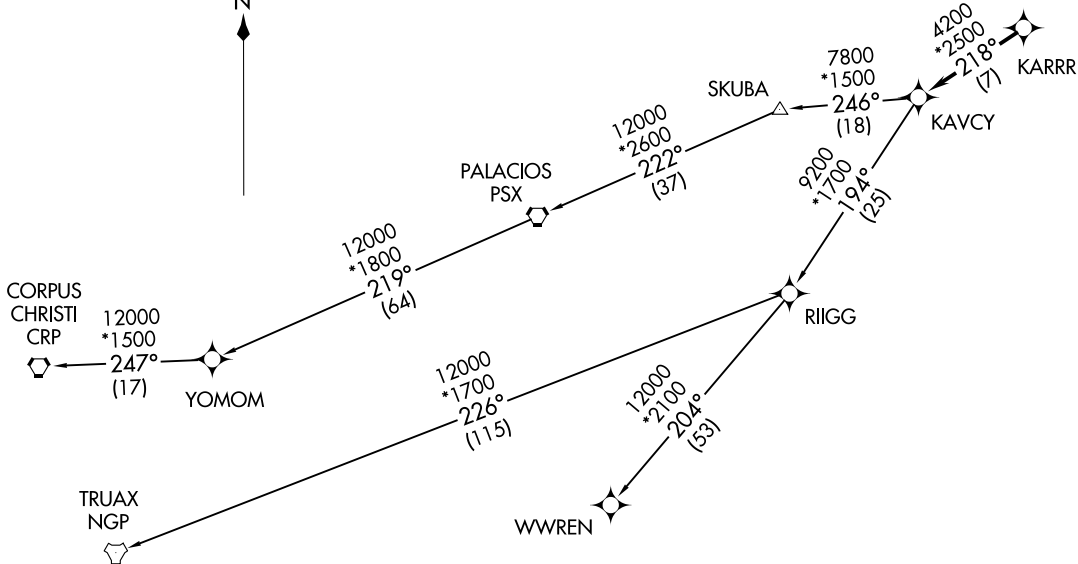
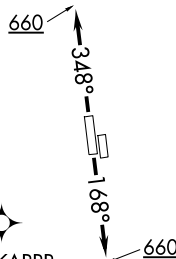
TAKEOFF MINIMUMS

Rwys 17L, 35R: NA - Environmental.

Waterways 17, 35: NA - Air Traffic.

Rwys 17R, 35L: Standard with minimum climb of 500' per NM to 660.

ATIS
128.375
CLNC DEL
119.45
GND CON
121.8 239.0
HOOKS TOWER *
127.4 354.1 (EAST)
118.4 (CTAF) 354.1 (WEST)
HOUSTON DEP CON
123.8 257.7 (Rwys 17L/R)
119.7 281.4 (Rwys 35L/R)



(NARRATIVE ON FOLLOWING PAGE)

NOTE: Chart not to scale.

KARRR SEVEN DEPARTURE (RNAV)
(KARRR7 .KARRR) 29DEC22

DAVID WAYNE HOOKS MEML (DWH)
HOUSTON, TEXAS

(KARRR7 .KARRR) 22363
KARRR SEVEN DEPARTURE (RNAV)

AL-5457 (FAA)

DAVID WAYNE HOOKS MEML (DWH)
HOUSTON, TEXAS

KARRR SEVEN DEPARTURE (RNAV)



DEPARTURE ROUTE DESCRIPTION

TAKEOFF RUNWAY 17R: Climb on heading 168° to 660, for RADAR vectors to KARRR, thence. . . .

TAKEOFF RUNWAY 35L: Climb on heading 348° to 660, for RADAR vectors to KARRR, thence. . . .

. . . .on track 218° to KAVCY, then on (transition). Maintain ATC assigned altitude. Expect filed altitude 10 minutes after departure.

CORPUS CHRISTI TRANSITION (KARRR7.CRP)

PALACIOS TRANSITION (KARRR7.PSX)

TRUAX TRANSITION (KARRR7.NGP)

WWREN TRANSITION (KARRR7.WWREN)

YOMOM TRANSITION (KARRR7.YOMOM)

SC-5, 11 JUN 2026 to 09 JUL 2026

SC-5, 11 JUN 2026 to 09 JUL 2026