

LUFKIN FOUR DEPARTURE

HOUSTON, TEXAS

HOUSTON DEP CON
 119.7 281.4
 ATIS
 128.375
 CLNC DEL
 119.45
 GND CON
 121.8 239.0
 HOOKS TOWER ★
 127.4 354.1 (E)
 118.4 (CTAF) 354.1 (W)

**TOP ALTITUDE:
 ASSIGNED BY ATC**

LITTLE ROCK
 115.1 LIT
 Chan 98

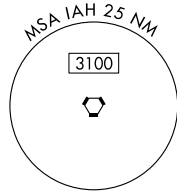
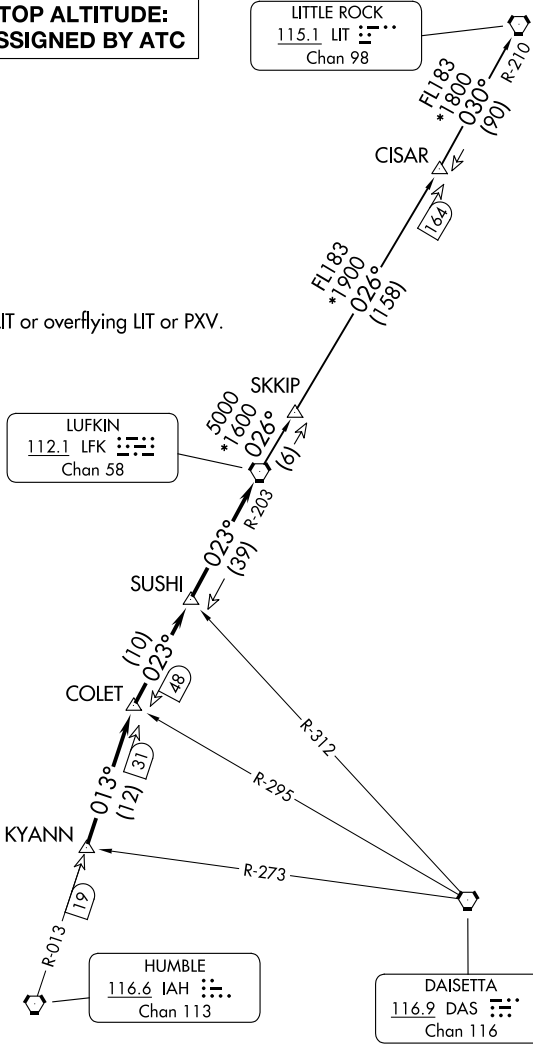
RADAR and DME required.

NOTE: For aircraft destined LIT or overflying LIT or PXV.

LUFKIN
 112.1 LFK
 Chan 58

HUMBLE
 116.6 IAH
 Chan 113

DAISETTA
 116.9 DAS
 Chan 116



TAKEOFF MINIMUMS
 Rwy 17L, 35R: NA-Environmental.
 Waterways 17, 35: NA-Air Traffic.
 Rwy 17R, 35L: Standard.

NOTE: Chart not to scale.

(CONTINUED ON FOLLOWING PAGE)

SC-5, 11 JUN 2026 to 09 JUL 2026

SC-5, 11 JUN 2026 to 09 JUL 2026

LUFKIN FOUR DEPARTURE

(LFK4.LFK) 27NOV25

HOUSTON, TEXAS

DAVID WAYNE HOOKS MEML (DWH)

LUFKIN FOUR DEPARTURE



DEPARTURE ROUTE DESCRIPTION

TAKEOFF ALL RUNWAYS: When entering controlled airspace, climb on assigned heading for RADAR vectors to KYANN INT. Maintain ATC assigned altitude. Expect filed altitude 10 minutes after departure, thence. . .

. . . on IAH R-013 to COLET INT, then on depicted route to LFK VORTAC.

LITTLE ROCK TRANSITION (LFK4.LIT): From over LFK VORTAC on LFK R-026 to CISAR, then on LIT R-210 to LIT VORTAC.

SC-5, 11 JUN 2026 to 09 JUL 2026

SC-5, 11 JUN 2026 to 09 JUL 2026