

(BLTWY7.BLTWY) 21280

GEORGE BUSH INTCNTL/HOUSTON (IAH)

BLTWY SEVEN DEPARTURE (RNAV) AL-5461 (FAA)

HOUSTON, TEXAS

D-ATIS
 124.05
 CLNC DEL
 128.1
 CPDLC
 GND CON
 118.575 (Rwys 8L/R, 26L/R, 9/27)
 121.7 (Rwys 15L/R, 33L/R)
 HOUSTON TOWER
 120.725 290.2 (Rwys 8L/26R)
 125.35 290.2 (Rwys 8R/26L)
 127.3 288.25 (Rwys 15L/R, 33L/R)
 135.15 290.2 (Rwys 9/27)
 HOUSTON DEP CON
 132.25 285.425

**TOP ALTITUDE:
 16000**

NOTE: RADAR required.
 NOTE: DME/DME/IRU or GPS required.
 NOTE: RNAV 1.

TAKEOFF MINIMUMS

Rwys 8L/R, 9, 15L/R, 26L/R, 27, 33L/R:
 Standard with minimum climb of 500' per NM to 600.

DEPARTURE ROUTE DESCRIPTION

TAKEOFF RUNWAYS 8L/R, 9: Climb on heading 087° to 600 for RADAR vectors to DREMR, thence

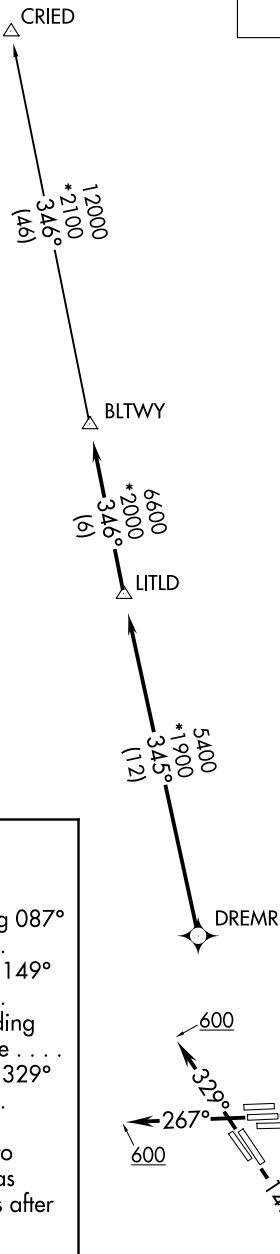
TAKEOFF RUNWAYS 15L/R: Climb on heading 149° to 600 for RADAR vectors to DREMR, thence

TAKEOFF RUNWAYS 26L/R, 27: Climb on heading 267° to 600 for RADAR vectors to DREMR, thence

TAKEOFF RUNWAYS 33L/R: Climb on heading 329° to 600 for RADAR vectors to DREMR, thence

. . . . on track 345° to LITLD, then on track 346° to BLTWY, then on (transition). Maintain 16000 or as assigned by ATC. Expect filed altitude 10 minutes after departure.

CRIED TRANSITION (BLTWY7.CRIED)



NOTE: Chart not to scale.

SC-5, 11 JUN 2026 to 09 JUL 2026

SC-5, 11 JUN 2026 to 09 JUL 2026

BLTWY SEVEN DEPARTURE (RNAV)

HOUSTON, TEXAS

(BLTWY7.BLTWY) 07OCT21

GEORGE BUSH INTCNTL/HOUSTON (IAH)