

EL DORADO ONE DEPARTURE

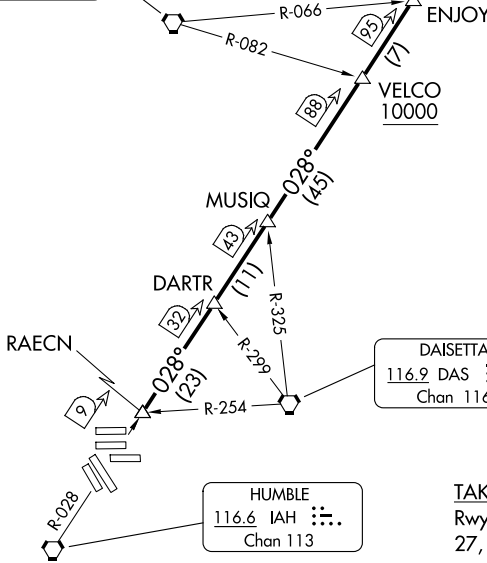
D-ATIS
 124.05
 CLNC DEL
 128.1
 CPDLC
 GND CON
 118.575 (Rwys 8L/R, 26L/R, 9/27)
 121.7 (Rwys 15L/R, 33L/R)
 HOUSTON TOWER
 120.725 290.2 (Rwys 8L/26R)
 125.35 290.2 (Rwys 8R/26L)
 127.3 288.25 (Rwys 15L/R, 33L/R)
 135.15 290.2 (Rwys 9/27)
 HOUSTON DEP CON
 132.25 285.425

**TOP ALTITUDE:
 16000**

EL DORADO
 115.5 ELD Chan 102

NOTE: RADAR required.
 NOTE: For aircraft destined KMEM
 or filed via Q32 or J42.

LUFKIN
 112.1 LFK Chan 58



DAISETTA
 116.9 DAS Chan 116

HUMBLE
 116.6 IAH Chan 113

TAKEOFF MINIMUMS
 Rwys 8L/R, 9, 15L/R, 26L/R,
 27, 33L/R: Standard.

NOTE: Chart not to scale.

DEPARTURE ROUTE DESCRIPTION

TAKEOFF ALL RUNWAYS: Climb on assigned heading for RADAR vectors to RAECN INT, maintain 16000. Expect filed altitude 10 minutes after departure, thence . . .

. . . on IAH R-028 and the ELD R-208 to ELD VOR/DME, cross VELCO INT at or above 10000.

SC-5, 11 JUN 2026 to 09 JUL 2026

SC-5, 11 JUN 2026 to 09 JUL 2026