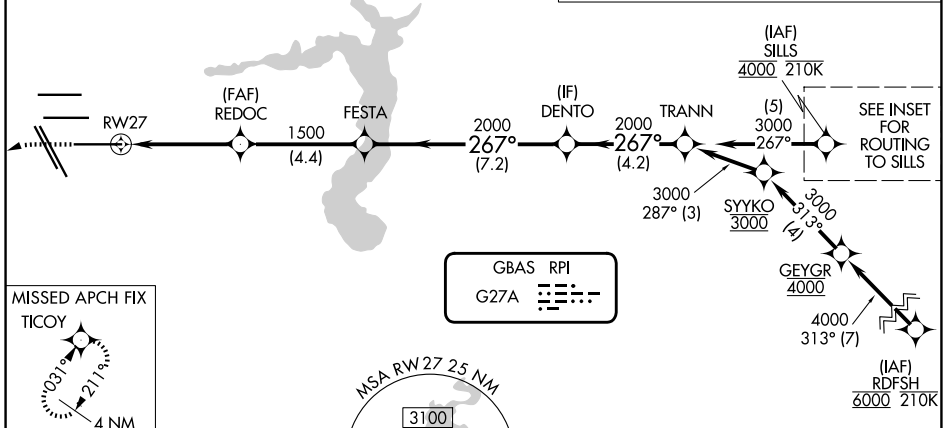
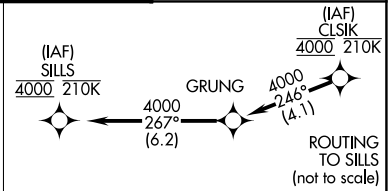


GBAS CH <b>22306</b> <b>G27A</b>	APP CRS <b>267°</b>	Rwy Ldg TDZE Apt Elev	<b>10000</b> <b>86</b> <b>96</b>
--	------------------------	-----------------------------	--

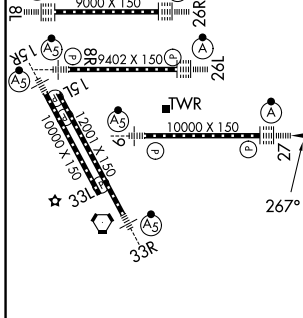
# GLS RWY 27

GEORGE BUSH INTCNL/HOUSTON (IAH)

RNP APCH - GPS.		ALSIF-2 	MISSED APPROACH: Climb to 560 then climbing left turn to 3100 direct TICOY and hold.
Simultaneous approach authorized. Use of FD or AP required during simultaneous operations. Autopilot coupled approach NA below 286.			
D-ATIS <b>124.05</b>	HOUSTON APP CON <b>120.05 379.1 E</b> <b>124.35 316.15 W</b>	HOUSTON TOWER <b>135.15 290.2</b>	GND CON <b>118.575</b>

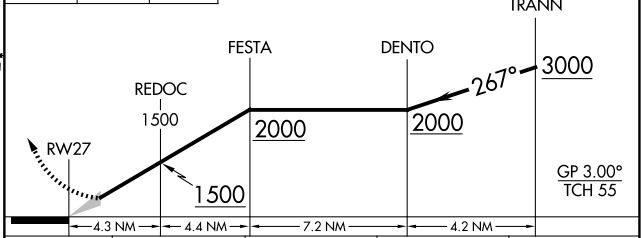


ELEV 96	<b>D</b>	TDZE 86
---------	----------	---------



560 3100 TICOY

VGSI and GLS glidepath not coincident (VGSI Angle 3.00/TCH 70).



CATEGORY	A	B	C	D
GLS DA	286/18 200 (200-1/2)			

TDZ/CL Rwy 8R, 8L, 15R, 26R, 26L, 27 and 33L  
HIRL all Rwy

SC-5, 11 JUN 2026 to 09 JUL 2026

SC-5, 11 JUN 2026 to 09 JUL 2026