

GUMBY THREE DEPARTURE (RNAV)  
(GUMBY3,GUMBY) 10DEC15

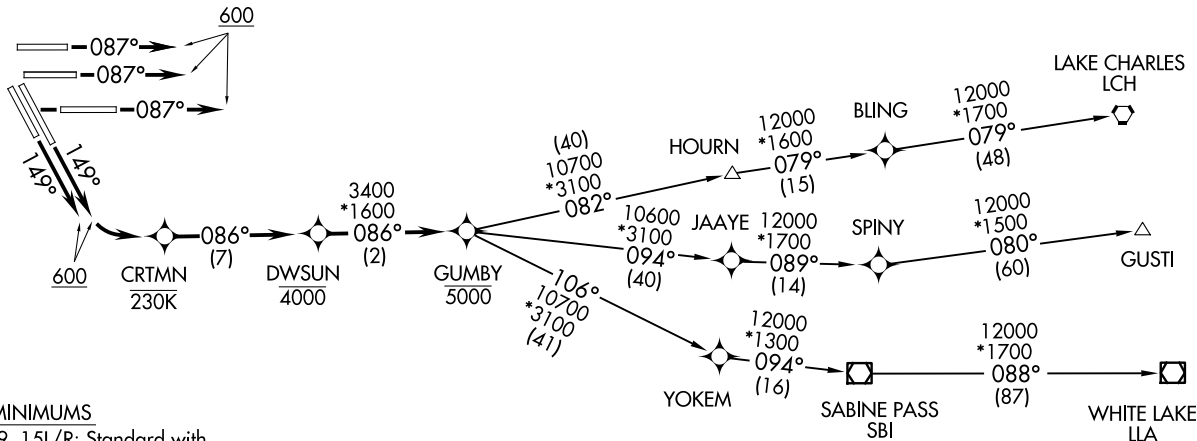
HOUSTON, TEXAS  
GEORGE BUSH INTNTL/HOUSTON (IAH)

(GUMBY3,GUMBY) 21112  
GUMBY THREE DEPARTURE (RNAV)

HOUSTON, TEXAS  
GEORGE BUSH INTNTL/HOUSTON (IAH)  
AL-5461 (FAA)

- D-ATIS 124.05
- CLNC DEL 128.1
- CPDLC
- GND CON
- 118.575 (Rwys 8L/R, 26L/R, 9, 27)
- 121.7 (Rwys 15L/R, 33L/R)
- HOUSTON TOWER
- 120.725 290.2 (Rwys 8L, 26R)
- 125.35 290.2 (Rwys 8R, 26L)
- 127.3 288.25 (Rwys 15L/R, 33L/R)
- 135.15 290.2 (Rwys 9, 27)
- HOUSTON DEP CON
- 127.125 269.075

TOP ALTITUDE:  
16000



TAKEOFF MINIMUMS

Rwy 8L/R, 9, 15L/R: Standard with minimum climb of 500' per NM to 1700.

- NOTE: RADAR required.
- NOTE: DME/DME/IRU or GPS Required.
- NOTE: RNAV 1.

(NARRATIVE ON FOLLOWING PAGE)

NOTE: Chart not to scale.



DEPARTURE ROUTE DESCRIPTION

TAKEOFF RUNWAYS 8L/R, 9: Climb heading 087° to 600, expect RADAR vectors to cross DWSUN at or below 4000, thence. . . .

TAKEOFF RUNWAYS 15L/R: Climb heading 149° to 600, then left turn direct CRTMN, then on track 086° to cross DWSUN at or below 4000, thence. . . .

. . . .on track 086° to cross GUMBY at or below 5000, then on (transition). Maintain 16000. Expect filed altitude 10 minutes after departure.

GUSTI TRANSITION (GUMBY3.GUSTI)

LAKE CHARLES TRANSITION (GUMBY3.LCH)

WHITE LAKE TRANSITION (GUMBY3.LLA)

SC-5, 11 JUN 2026 to 09 JUL 2026

SC-5, 11 JUN 2026 to 09 JUL 2026