

LOC/DME I-JYV 109.7 Chan 34	APP CRS 267°	Rwy Ldg TDZE Apt Elev	9402 95 96
---	------------------------	-----------------------------	---------------------------------------

ILS RWY 26L (CAT II & III)

GEORGE BUSH INTCNL/HOUSTON (IAH)

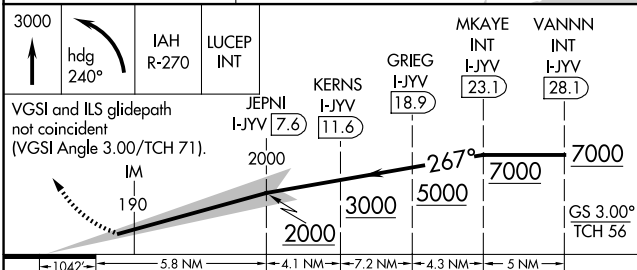
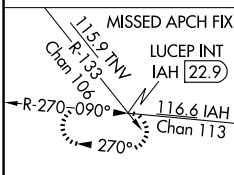
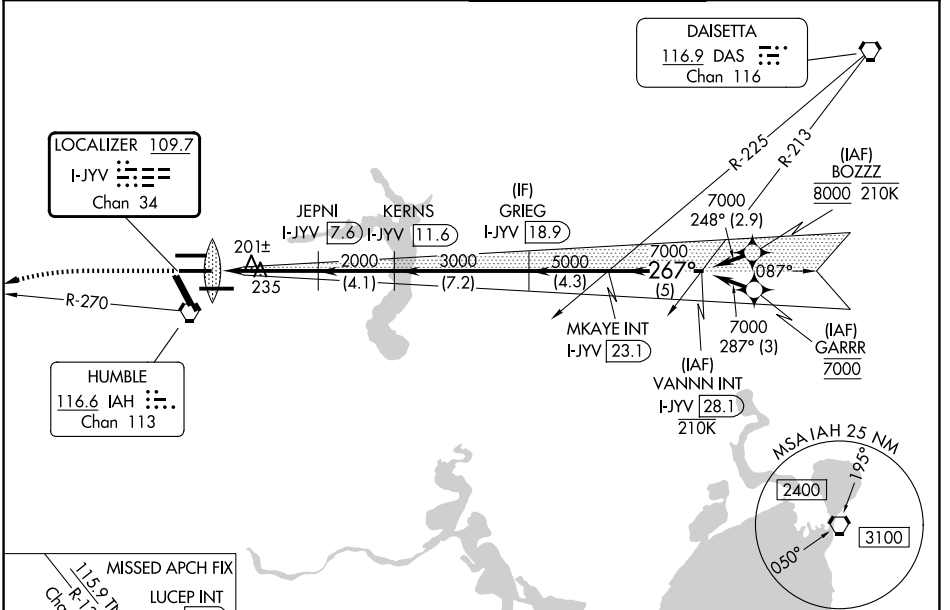
DME required. From BOZZZ, GARRR: RNAV 1-GPS required.

Simultaneous approach authorized with Rwy 26R and Rwy 27.
Cat II: RVR 1000 authorized with specific OPSPEC, MSPEC, or LOA approval and use of outland or HUD to touchdown.

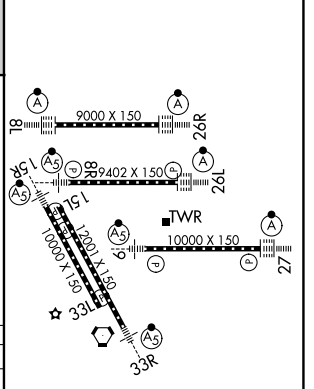
ALSF-2

MISSED APPROACH: Climb to 3000 then left turn heading 240° and IAH VORTAC R-270 to LUCEP INT/IAH 22.9 DME and hold.

D-ATIS 124.05	HOUSTON APP CON 120.05 379.1 E 124.35 316.15 W	HOUSTON TOWER 125.35 290.2	GND CON 118.575
-------------------------	--	--------------------------------------	---------------------------



ELEV 96	D TDZE 95
---------	------------------



CATEGORY	A	B	C	D
S-ILS 26L	CAT II RA 100/12		100 DA 195	
S-ILS 26L	CAT III RVR 06			

CATEGORY II & III ILS - SPECIAL AIRCREW & AIRCRAFT CERTIFICATION REQUIRED

TDZ/CL Rwsy 8R, 8L, 15R, 26R, 26L, 27 and 33L
HIRL all Rwsy

SC-5, 11 JUN 2026 to 09 JUL 2026

SC-5, 11 JUN 2026 to 09 JUL 2026