

LOC/DME I-GHI 110.9 Chan 46	APP CRS 267°	Rwy Ldg 10000 TDZE 86 Apt Elev 96
---	------------------------	--

ILS RWY 27 (SA CAT I)

GEORGE BUSH INTCNL/HOUSTON (IAH)

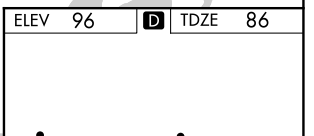
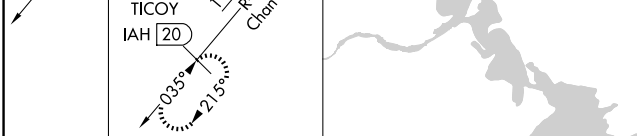
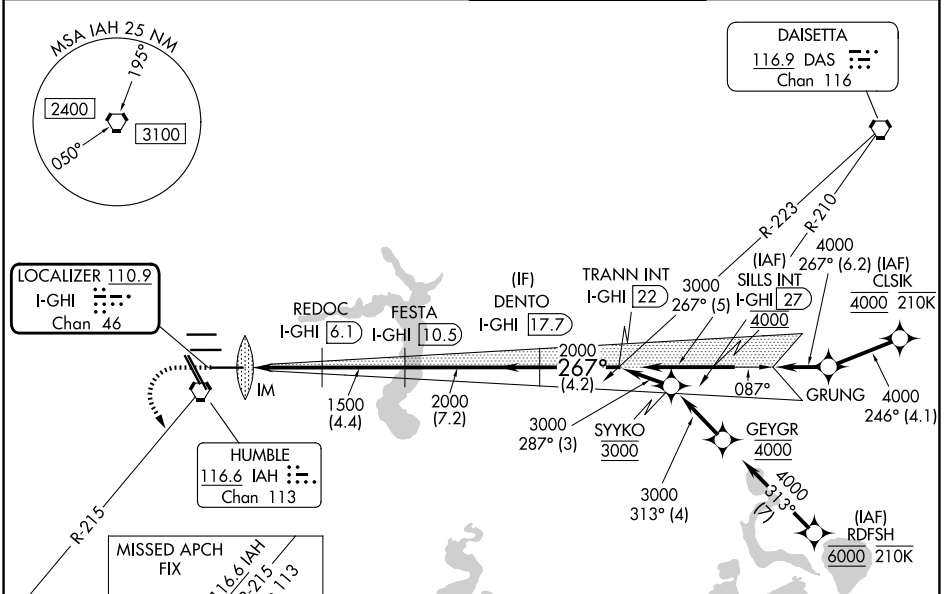
RNAV 1-GPS or RADAR required for procedure entry. DME required.

ALSF-2

MISSED APPROACH: Climb to 560 then climbing left turn to 3000 on IAH VORTAC R-215 to TICOO/IAH 20 DME and hold.

Simultaneous approach authorized. Use of FD or AP required during simultaneous operations. Requires specific OPSPEC, MSPEC, or LOA approval and use of HUD to DH.

D-ATIS 124.05	HOUSTON APP CON 120.05 379.1 E 124.35 316.15 W	HOUSTON TOWER 135.15 290.2	GND CON 118.575
-------------------------	--	--------------------------------------	---------------------------



560	3000	TICOO IAH 20	VGSI and ILS glidepath not coincident (VGSI Angle 3.00/TCH 70).	TRANN INT I-GHI [22]
IM	1500	REDOC I-GHI [6.1]	FESTA I-GHI [10.5]	DENTO I-GHI [17.7]
1035'	4.3 NM	4.4 NM	7.2 NM	4.2 NM
CATEGORY	A	B	C	D
S-ILS 27	RA 157/14 150 DA 236			

SA CATEGORY I ILS - SPECIAL AIRCREW & AIRCRAFT CERTIFICATION REQUIRED

TDZ/CL Rwws 8R, 8L, 15R, 26R, 26L, 27 and 33L
HIRL all Rwws

SC-5, 11 JUN 2026 to 09 JUL 2026

SC-5, 11 JUN 2026 to 09 JUL 2026