

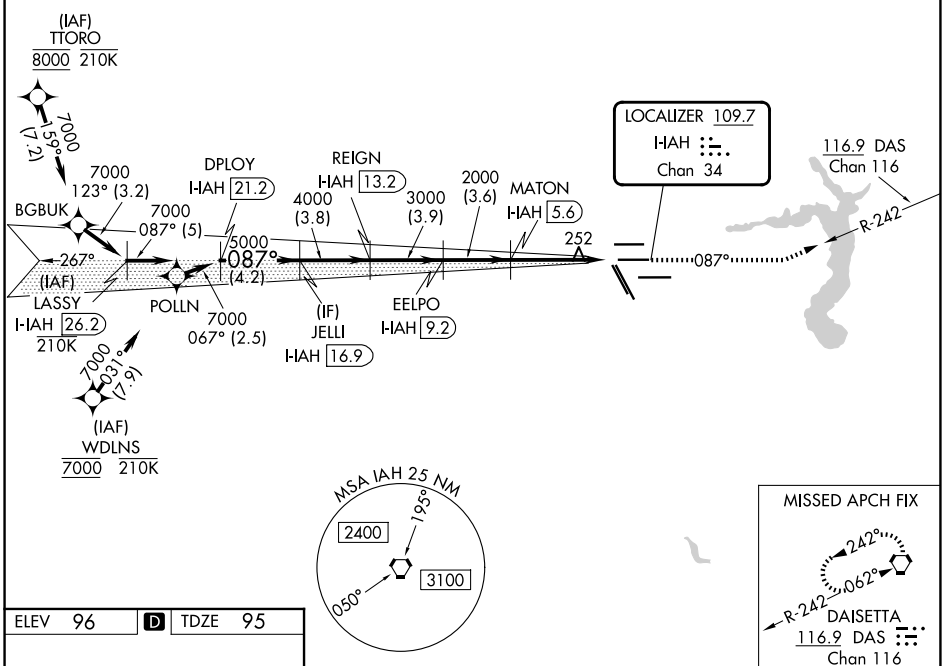
LOC/DME I-IAH 109.7 Chan 34	APP CRS 087°	Rwy Ldg 9402 TDZE 95 Apt Elev 96
---	------------------------	---

ILS RWY 8R (SA CAT I & II)

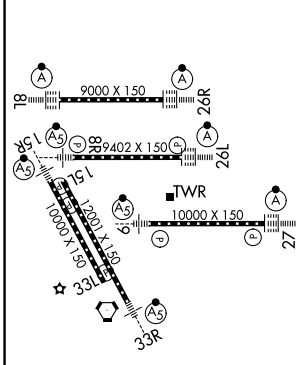
GEORGE BUSH INTCNL/HOUSTON (IAH)

RNAV 1-GPS or RADAR required for procedure entry, DME.	MALSR 	MISSED APPROACH: Climb to 3000 on heading 087° and on DAS VORTAC R-242 to DAS VORTAC and hold.
--	-----------	--

D-ATIS 124.05	HOUSTON APP CON 120.05 379.1 E 124.35 316.15 W	HOUSTON TOWER 125.35 290.2	GND CON 118.575
-------------------------	--	--------------------------------------	---------------------------



ELEV 96	D	TDZE 95
---------	----------	---------



TDZ/CL Rwy 8R, 8L, 15R, 26R, 26L, 27 and 33L
HIRL all Rwy

VGSi and ILS glidepath not coincident (VGSi Angle 3.00/TCH 72).		3000	DAS
LASSY I-IAH 26.2	DPLOY I-IAH 21.2	JELLI I-IAH 16.9	EELPO I-IAH 9.2
7000 087°	7000 087°	5000	4000
GS 3.00°	TCH 55	3000	2000
MISSED APCH FIX		↑ hdg 087°	DAS R-242
DAISSETA 116.9 DAS Chan 116			
5 NM	4.2 NM	3.8	3.9
3.6	5.8 NM	1040'	
CATEGORY	A	B	C
S-ILS 8R	SA CAT I RA 152/14	150	DA 245
S-ILS 8R	SA CAT II RA 102/12	100	DA 195

SA CATEGORY I and II ILS SPECIAL AIRCREW & AIRCRAFT CERTIFICATION REQUIRED

SC-5, 11 JUN 2026 to 09 JUL 2026

SC-5, 11 JUN 2026 to 09 JUL 2026