

LOC/DME I-UYO 110.9 Chan 46	APP CRS 087°	Rwy Ldg 10000 TDZE 90 Apt Elev 96
---	------------------------	--

ILS RWY 9 (SA CAT I & II)

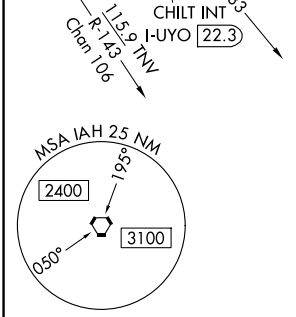
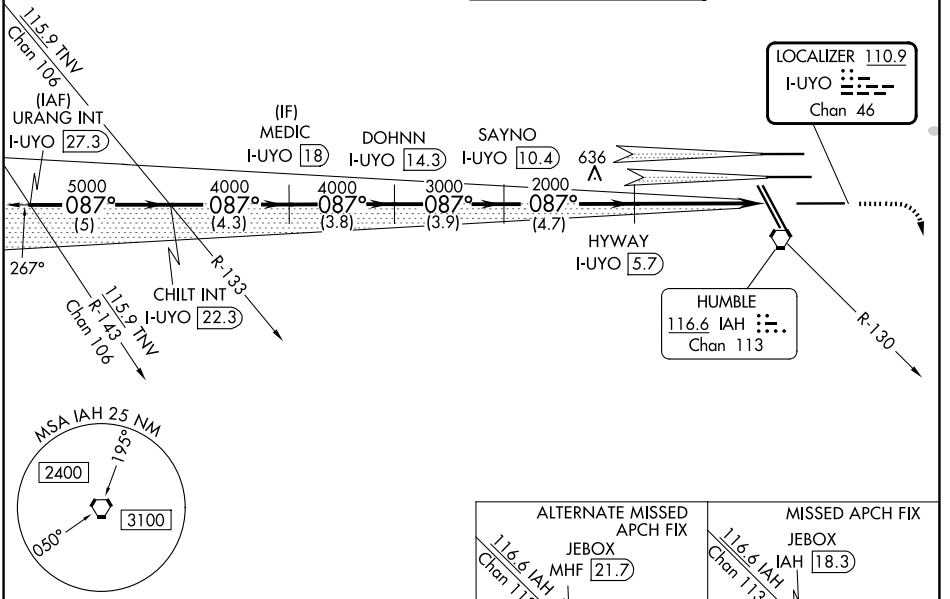
GEORGE BUSH INTCNL/HOUSTON (IAH)

DME required. RADAR required for procedure entry.

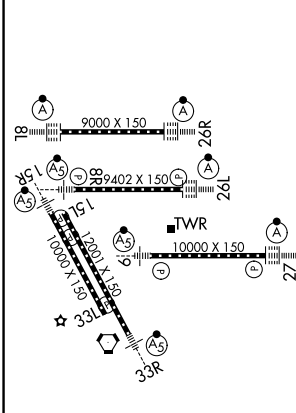
Simultaneous approach authorized with Rwy 8L/R. SA CAT I: Requires specific OPSPEC, MSPEC, or LOA approval and use of AUTOLAND or HUD to touchdown. SA CAT II: Reduced lighting: requires specific OPSPEC, MSPEC, or LOA approval and use of AUTOLAND or HUD to touchdown.

MALS R  MISSED APPROACH: Climb to 580 then climbing right turn to 3000 on IAH VORTAC R-130 to JEBOX/IAH 18.3 DME and hold.

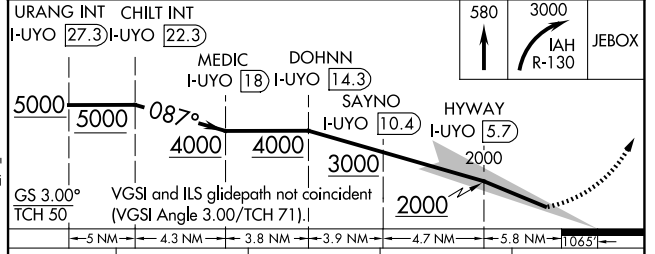
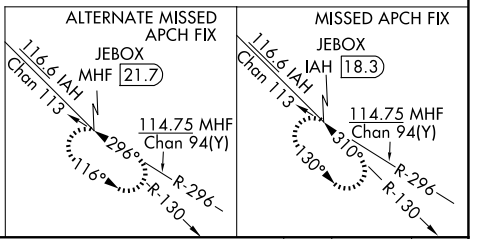
D-ATIS 124.05	HOUSTON APP CON 120.05 379.1 E 124.35 316.15 W	HOUSTON TOWER 135.15 290.2	GND CON 118.575
-------------------------	--	--------------------------------------	---------------------------



ELEV 96	D	TDZE 90
---------	----------	---------



TDZ/CL Rwy 8R, 8L, 15R, 26R, 26L, 27 and 33L
HIRL all Rwy



CATEGORY	A	B	C	D
S-ILS 9	SA CAT I RA 148/14 150 DA 240			
S-ILS 9	SA CAT II RA 98/12 100 DA 190			

SA CATEGORY I and II ILS SPECIAL AIRCREW & AIRCRAFT CERTIFICATION REQUIRED

SC-5, 11 JUN 2026 to 09 JUL 2026

SC-5, 11 JUN 2026 to 09 JUL 2026