

WAAS CH 97599	APP CRS 149°	Rwy Ldg 10000
W15A		TDZE 95
		Apt Elev 96

RNAV (GPS) RWY 15R

GEORGE BUSH INTCNL/HOUSTON (IAH)

RADAR required for procedure entry.
RNP APCH.

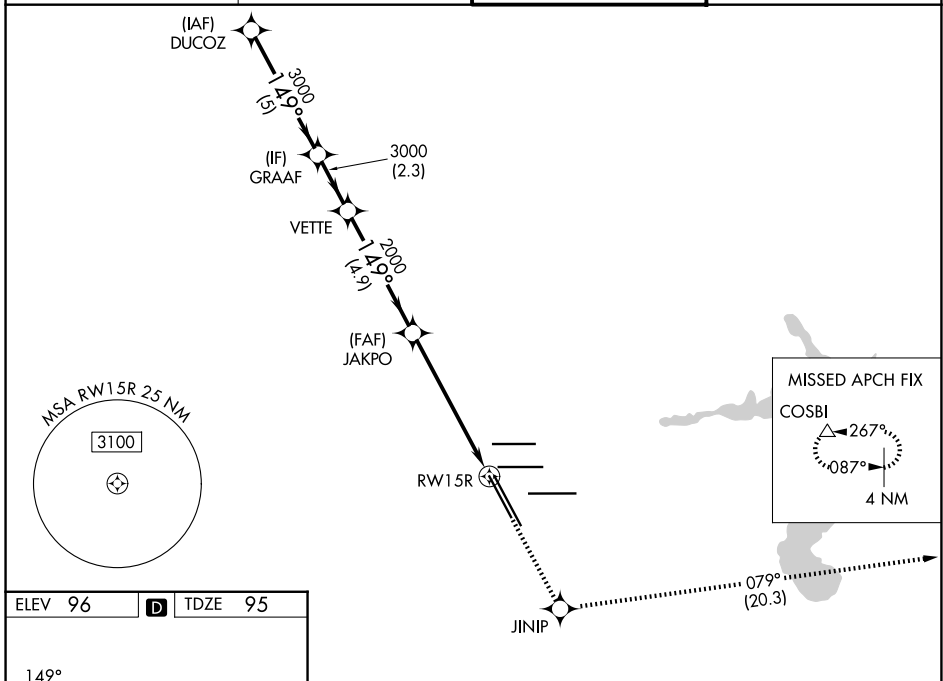
⚠ For uncompensated Baro-VNAV systems, LNAV/VNAV NA below -3°C or above 54°C. For inop ALS, increase LPV Cat E visibility to RVR 4000, LNAV/VNAV all Cats visibility to RVR 5500, and LNAV Cat C/D/E visibility to 1 3/8 SM.

MALSR

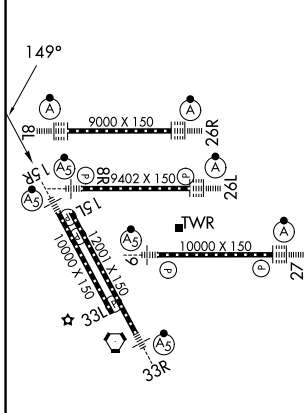


MISSED APPROACH: Climb to 2000 direct JINIP and left turn on track 079° to COSBI and hold.

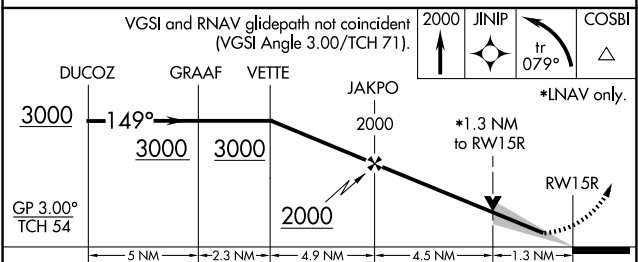
D-ATIS 124.05	HOUSTON APP CON 120.05 379.1 E 124.35 316.15 W	HOUSTON TOWER 127.3 288.25	GND CON 121.7
-------------------------	--	--------------------------------------	-------------------------



ELEV 96	D	TDZE 95
---------	----------	---------



TDZ/CL Rwy 8R, 8L, 15R, 26R, 26L, 27 and 33L
HIRL all Rwy



CATEGORY	A	B	C	D	E
LPV DA		295/18	200 (200-1/2)		
LNAV/VNAV DA		460/35	365 (400-3/4)		
LNAV MDA	580/24	485 (500-1/2)		580/50	485 (500-1)

SC-5, 11 JUN 2026 to 09 JUL 2026

SC-5, 11 JUN 2026 to 09 JUL 2026