


WAAS CH 57902 W33A	APP CRS 329°	Rwy 33R Rwy Ldg 12001 TDZE 89 Apt Elev 96	Rwy 33L Rwy Ldg 10000 TDZE 90 Apt Elev 96
--	------------------------	---	---

RNAV (GPS) RWY 33R

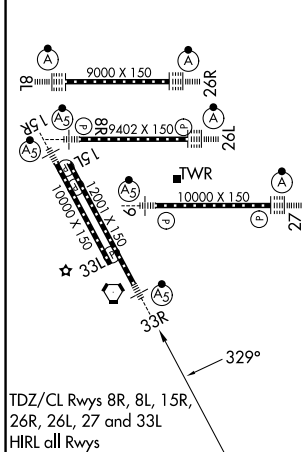
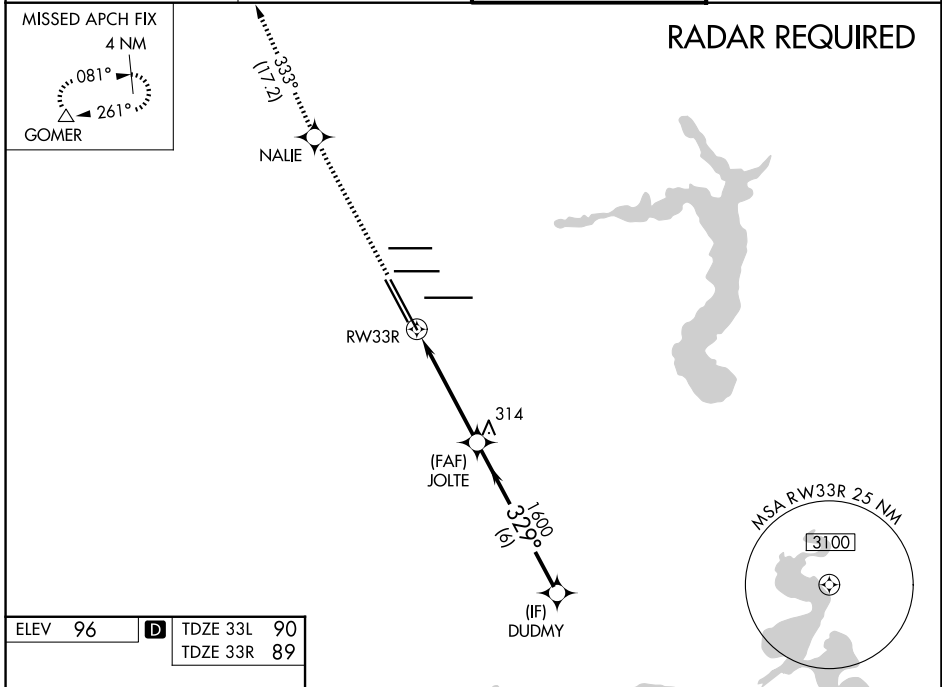
GEORGE BUSH INTCNL/HOUSTON (IAH)

▼ For uncompensated Baro-VNAV systems, LNAV/VNAV NA below -3°C (27°F) or above 54°C (130°F). For inop MALS, increase LPV Cat E visibility to RVR 4000, LNAV/VNAV Cat E visibility to 1½, and LNAV Cat E visibility to 1½. DME/DME RNP-0.3 NA. **RVR 1800 authorized with use of FD or AP or HUD to DA.

MALS 

MISSED APPROACH: Climb to 2000 direct NALIE and on track 333° to GOMER and hold.

D-ATIS 124.05	HOUSTON APP CON 120.05 379.1 E 124.35 316.15 W	HOUSTON TOWER 127.3 288.25	GND CON 121.7
-------------------------	--	--------------------------------------	-------------------------



ELEV 96	D	TDZE 33L 90	TDZE 33R 89		
2000	NALIE	tr 333°	GOMER		
*LNAV only.					
*1.3 NM to RW33R					
DUDMY					
JOLTE 1600					
RW33R					
GP 3.00° TCH 49					
1.3 NM	3.3 NM	6 NM			
CATEGORY	A	B	C	D	E
LPV DA**	289/24		200 (200-½)		
LNAV/VNAV DA	490/45		401 (400-7%)		
LNAV MDA	540/24	451 (500-½)	540/45		451 (500-7%)
SIDESTEP 33L	540-1	450 (500-1)	540-1½	540-2	NA
			450 (500-1½)	450 (500-2)	

SC-5, 11 JUN 2026 to 09 JUL 2026

SC-5, 11 JUN 2026 to 09 JUL 2026