

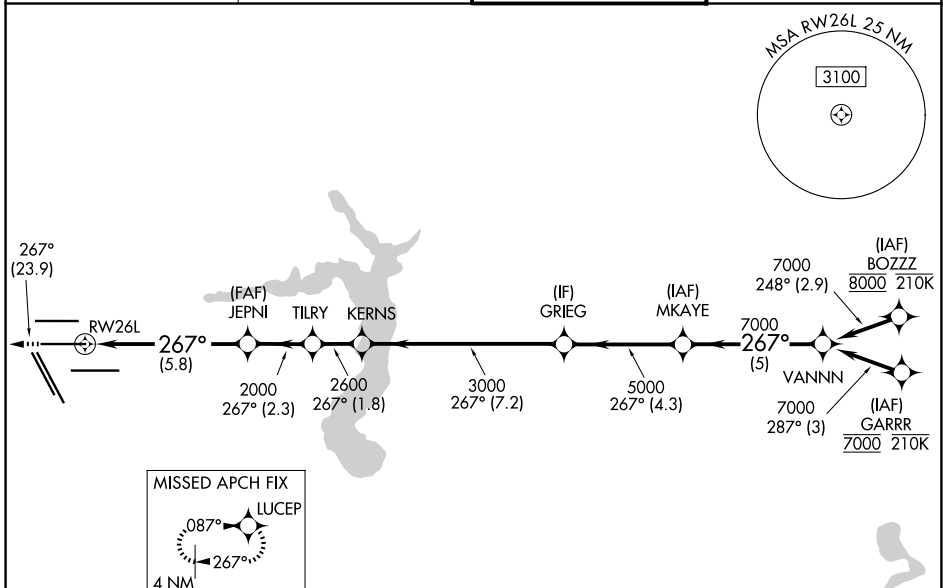
APP CRS	Rwy Ldg	9402
267°	TDZE	95
	Apt Elev	96

RNAV (RNP) Y RWY 26L

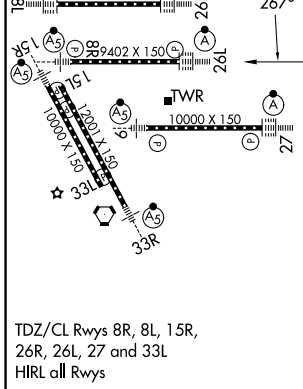
GEORGE BUSH INTCNL/HOUSTON (IAH)

RNP AR APCH - GPS.	<p>▼ For uncompensated Baro-VNAV systems, procedure NA below -3°C or above 54°C. Simultaneous approach authorized. For inop ALS, increase RNP 0.13 all Cats visibility to RVR 5100, and RNP 0.30 all Cats visibility to 1½ SM.</p>	<p>ALSF-2</p>	<p>MISSED APPROACH: Climb to 3000 on track 267° to LUCEP and hold.</p>
--------------------	--	---------------	--

D-ATIS 124.05	HOUSTON APP CON 120.05 379.1 E 124.35 316.15 W	HOUSTON TOWER 125.35 290.2	GND CON 118.575
-------------------------	--	--------------------------------------	---------------------------



ELEV 96	D	TDZE 95
---------	----------	---------



3000	LUCEP	VGSI and RNAV glidepath not coincident (VGSI Angle 3.00/TCH 71).					
fr 267°							
MKAYE	VANNN						
RW26L	JEPNI	TILRY	KERNS	GRIEG	MKAYE	VANNN	7000
2000	2600	3000	5000	7000	7000	7000	7000
5.8 NM	2.3 NM	1.8	7.2 NM	4.3 NM	5 NM		
GP 3.00°	TCH 56						
CATEGORY	A	B	C	D			
RNP 0.13 DA		414/40	319 (400-¾)				
RNP 0.30 DA		549/55	454 (500-1)				
AUTHORIZATION REQUIRED							

SC-5, 11 JUN 2026 to 09 JUL 2026

SC-5, 11 JUN 2026 to 09 JUL 2026