

APP CRS	Rwy Ldg	<b>9000</b>
<b>267°</b>	TDZE	<b>96</b>
	Apt Elev	<b>96</b>

# RNAV (RNP) Y RWY 26R

GEORGE BUSH INTCNTL/HOUSTON (IAH)

**▼** For uncompensated Baro-VNAV systems, procedure NA below -3°C (27°F) or above 54°C (130°F). GPS required. Simultaneous approach authorized. For inop ALS, increase RNP 0.11 all Cats visibility to RVR 5000 and increase RNP 0.15 all Cats visibility to 1½ SM. Use of FD or AP providing RNAV track guidance required during simultaneous operations.

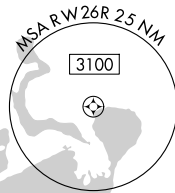
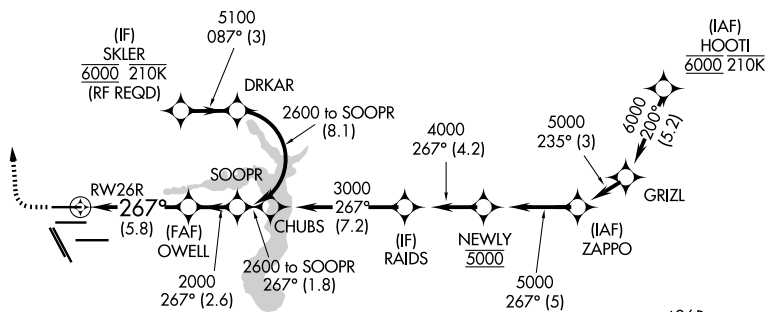
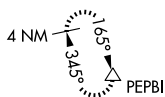
ALSF-2



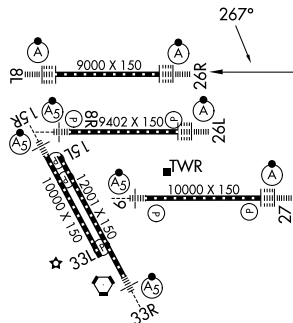
**MISSED APPROACH:** Climb to 600 then climbing right turn to 3000 direct PEPBI and hold.

D-ATIS <b>124.05</b>	HOUSTON APP CON <b>120.05 379.1 E</b> <b>124.35 316.15 W</b>	HOUSTON TOWER <b>120.725 290.2</b>	GND CON <b>118.575</b>
-------------------------	--	---------------------------------------	---------------------------

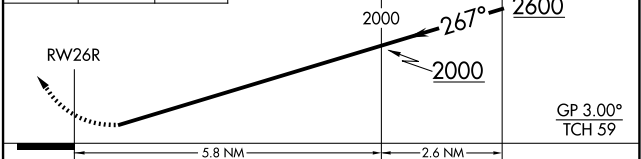
## RADAR REQUIRED



ELEV 96	<b>D</b>	TDZE 96
---------	----------	---------



600	3000	PEPBI	See planview for multiple IF locations.
-----	------	-------	---



CATEGORY	A	B	C	D
RNP 0.11 DA		429/40	333 (400-¾)	
RNP 0.15 DA		496/45	400 (400-¾)	
RNP 0.30 DA		554/50	458 (500-1½)	

## AUTHORIZATION REQUIRED