

APP CRS	Rwy Ldg	10000
087°	TDZE	91
	Apt Elev	96

RNAV (RNP) Y RWY 9

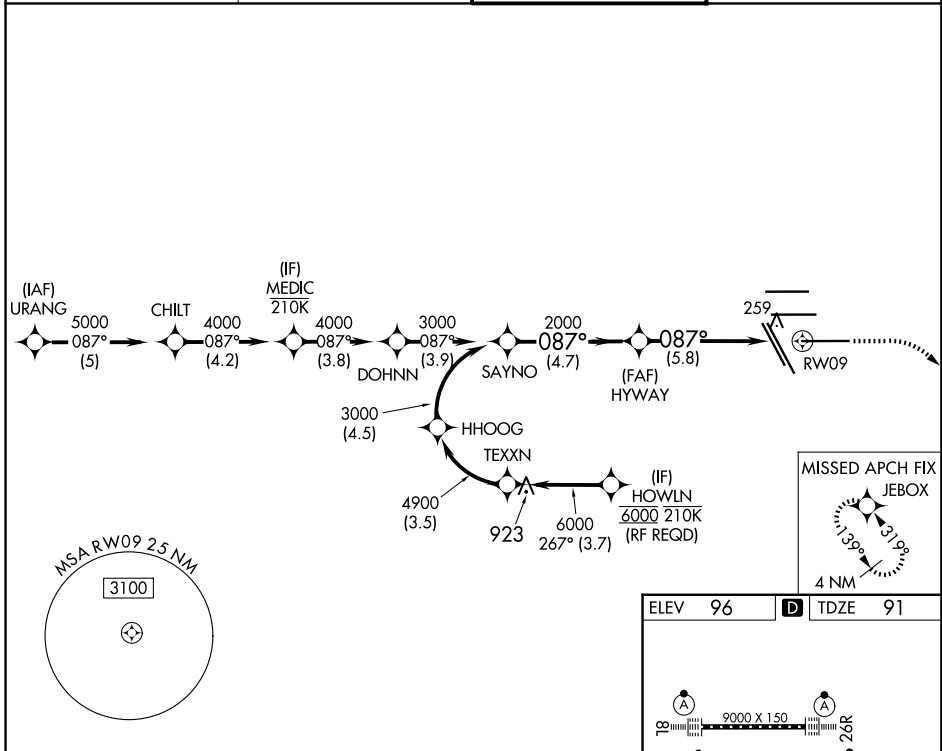
GEORGE BUSH INTCNL/HOUSTON (IAH)

▽ For uncompensated Baro-VNAV systems, procedure NA below -3°C (27°F) or above 54°C (130°F). GPS required. For inop MALS, increase all Cats visibility to 1 $\frac{3}{8}$ mile. Simultaneous approach authorized. Use of FD or AP providing RNAV track guidance required during simultaneous operations.

MALS
AS

MISSED APPROACH: Climb to 580 then climbing right turn to 3000 direct JEBOX and hold.

D-ATIS 124.05	HOUSTON APP CON 120.05 379.1 E 124.35 316.15 W	HOUSTON TOWER 135.15 290.2	GND CON 118.575
-------------------------	--	--------------------------------------	---------------------------



SC-5, 11 JUN 2026 to 09 JUL 2026

SC-5, 11 JUN 2026 to 09 JUL 2026

VGS1 and RNAV glidepath not coincident (VGS1 Angle 3.00/TCH 71).		580	3000	JEBOX
<p>SAYNO 3000 087°</p> <p>HYWAY 2000</p> <p>GP 3.00° TCH 50</p> <p>4.7 NM</p> <p>5.8 NM</p>		<p>↑</p> <p>↪</p>		
CATEGORY	A	B	C	D
RNP 0.30 DA	516/49 425 (500-1)			

AUTHORIZATION REQUIRED

TDZ/CL Rwwys 8R, 8L, 15R, 26R, 26L, 27 and 33L
HIRL all Rwwys