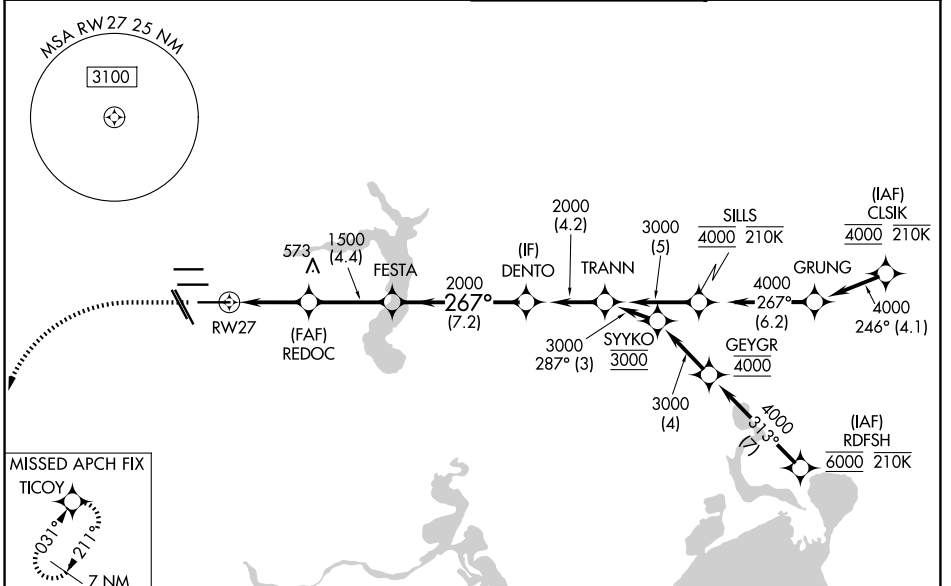


WAAS CH 69626 W27A	APP CRS 267°	Rwy Ldg 10000 TDZE 86 Apt Elev 96
----------------------------------------	------------------------	--------------------------------------------------------------

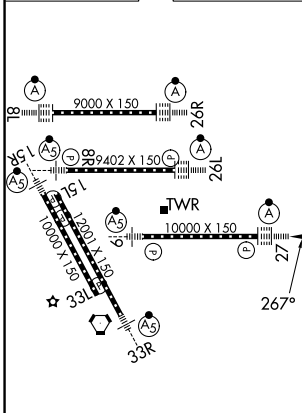
RNAV (GPS) Z RWY 27

GEORGE BUSH INTCNL/HOUSTON (IAH)

RNP APCH.		ALSF-2 	MISSED APPROACH: Climb to 560 then climbing left turn to 3100 direct TICCOY and hold.		
<p>Simultaneous approach authorized. LNAV procedure NA during simultaneous operations. Use of FD or AP required during simultaneous operations. For uncompensated Baro-VNAV systems, LNAV/VNAV NA below -2°C or above 54°C. For inop ALS, increase LPV Cat E visibility to RVR 4000, LNAV/VNAV Cat E visibility to RVR 6000, and LNAV Cats C, D and E visibility to 1 3/8 SM.</p>		D-ATIS 124.05	HOUSTON APP CON 120.05 379.1 E 124.35 316.15 W	HOUSTON TOWER 135.15 290.2	GND CON 118.575



ELEV 96	D	TDZE 86
---------	----------	---------



560	3100	TICCOY	VGSi and RNAV glidepath not coincident (VGSi Angle 3.00/TCH 70).		
*LNAV only.					
CATEGORY	A	B	C	D	E
LPV	DA	286/18		200 (200-1/2)	
LNAV/VNAV	DA	476/35		390 (400-5/8)	
LNAV MDA	560/24	474 (500-1/2)		560/50	474 (500-1)

TDZ/CL Rwy 8R, 8L, 15R, 26R, 26L, 27 and 33L
HIRL all Rwy

SC-5, 11 JUN 2026 to 09 JUL 2026

SC-5, 11 JUN 2026 to 09 JUL 2026