

WAAS CH <b>72926</b> <b>W09A</b>	APP CRS <b>087°</b>	Rwy Ldg <b>10000</b> TDZE <b>91</b> Apt Elev <b>96</b>
--	------------------------	--

# RNAV (GPS) Z RWY 9

GEORGE BUSH INTCNL/HOUSTON (IAH)

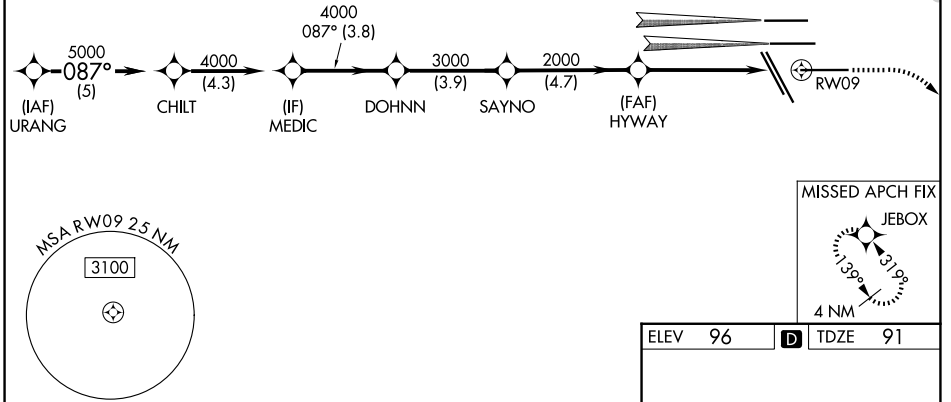
▼ For uncompensated Baro-VNAV systems, LNAV/VNAV NA below -3°C (27°F) or above 54°C (130°F). For inop MALSR, increase LPV Cat E visibility to RVR 4000, LNAV/VNAV Cat E visibility to 1½ mile, and LNAV Cat C/D/E visibility to 1¾ mile. Simultaneous approach authorized with Rwy 8L/R. DME/DME RNP-0.3 NA. LNAV procedure NA during simultaneous operations. Use of FD or AP providing RNAV track guidance required during simultaneous operations.  
 \*\* RVR 1800 authorized with use of FD or AP or HUD to DA.



MISSED APPROACH: Climb to 580 then climbing right turn to 3000 direct JEBOX and hold.

D-ATIS <b>124.05</b>	HOUSTON APP CON <b>120.05 379.1 E</b> <b>124.35 316.15 W</b>	HOUSTON TOWER <b>135.15 290.2</b>	GND CON <b>118.575</b>
-------------------------	--	--------------------------------------	---------------------------

## RADAR REQUIRED



SC-5, 11 JUN 2026 to 09 JUL 2026

SC-5, 11 JUN 2026 to 09 JUL 2026

VGSI and RNAV glidepath not coincident (VGSI Angle 3.00/TCH 71).

URANG	CHILT	MEDIC	DOHNN	SAYNO	HYWAY	JEBOX
5000	5000	4000	4000	3000	2000	580
GP 3.00°	087°					
TCH 50						
	5 NM	4.3 NM	3.8 NM	3.9 NM	4.7 NM	4.5 NM
CATEGORY	A	B	C	D	E	
LPV DA**		291/24	200 (200-½)			
LNAV/VNAV DA		525/50	434 (500-1)			
LNAV MDA	580/24	489 (500-½)	580/50	489 (500-1)		

