

WAAS CH <b>56436</b> <b>W20A</b>	APP CRS <b>199°</b>	Rwy Ldg <b>6506</b> TDZE <b>303</b> Apt Elev <b>303</b>
--	------------------------	---

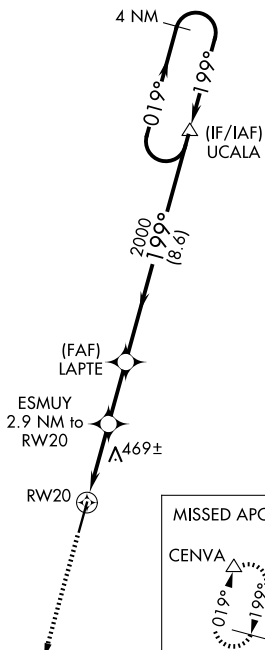
# RNAV (GPS) RWY 20

HEART OF GEORGIA RGNL (EZM)

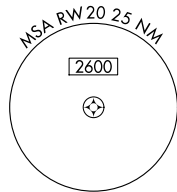
**⚠** Baro-VNAV NA when using Dublin altimeter setting. For uncompensated Baro-VNAV systems, LNAV/VNAV NA below -15°C (5°F) or above 54°C (130°F). When local altimeter setting not received, use Dublin altimeter setting and increase all DA 52 feet and all MDA 60 feet; increase LPV all Cats and LNAV Cat C/D visibility 1/8 mile and LNAV/VNAV all Cats and Circling Cat C visibility 1/4 mile. DME/DME RNP-0.3 NA. VDP NA with Dublin altimeter setting. Helicopter visibility reduction below 3/4 SM NA.

**MISSED APPROACH:**  
Climb to 2000 direct CENVA and hold.

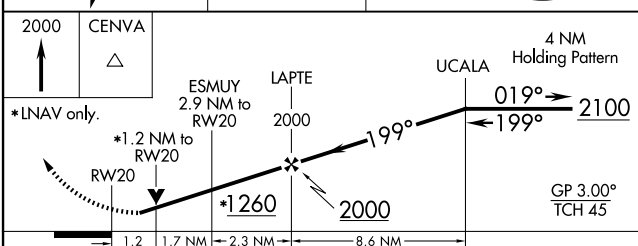
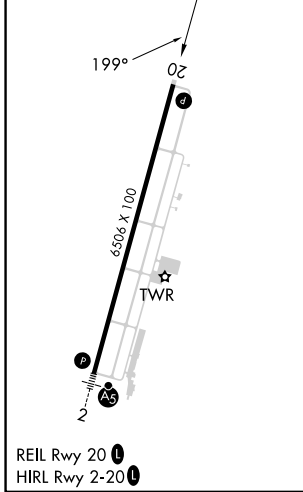
ATIS <b>119.425</b>	JACKSONVILLE CENTER <b>127.575 269.025</b>	HEART OF GEORGIA TOWER ★ <b>124.55 (CTAF) 0</b>	GND CON <b>121.175</b>	UNICOM <b>122.95</b>
------------------------	---	--	---------------------------	-------------------------



NoPT for arrival at UCALA on V5 southwest bound.



ELEV 303	TDZE 303
----------	----------



CATEGORY	A	B	C	D
LPV DA	602-1 299 (300-1)			
LNAV/VNAV DA	722-1 <sup>3</sup> / <sub>8</sub> 417 (500-1 <sup>3</sup> / <sub>8</sub> )			
LNAV MDA	720-1	417 (500-1)	720-1 <sup>1</sup> / <sub>4</sub>	417 (500-1 <sup>1</sup> / <sub>4</sub> )
CIRCLING	760-1 457 (500-1)	820-1 517 (600-1)	900-1 <sup>1</sup> / <sub>2</sub> 597 (600-1 <sup>1</sup> / <sub>2</sub> )	900-2 597 (600-2)

SE-4, 11 JUN 2026 to 09 JUL 2026

SE-4, 11 JUN 2026 to 09 JUL 2026