

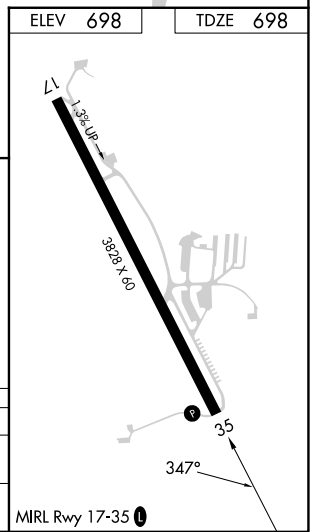
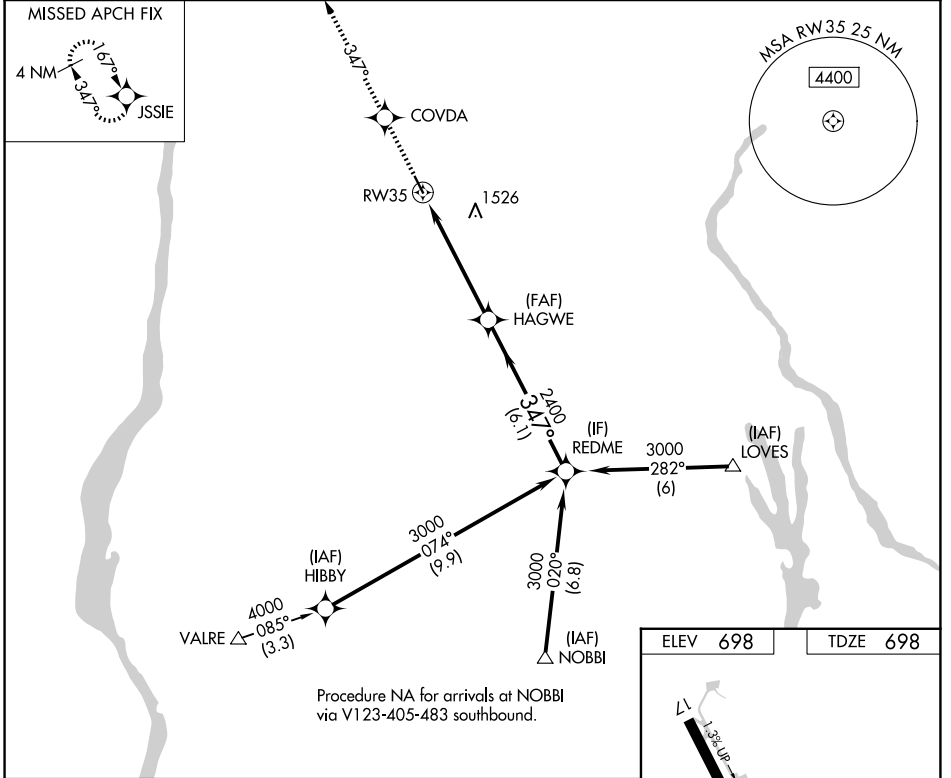
WAAS CH 86308 W35A	APP CRS 347°	Rwy Idg 3828 TDZE 698 Apt Elev 698
--	------------------------	---

RNAV (GPS) RWY 35

SKY ACRES (44N)

RNP APCH.	MISSED APPROACH: Climb to 3000 direct COVDA and via 347° track to JSSIE and hold.
NA -22°C	Use Newburgh altimeter setting; when not received use Poughkeepsie altimeter setting and increase LPV DA to 1063, and all MDA 20 feet.

SWF ASOS 124.575	POU ASOS 126.75	NEW YORK APP CON 132.75 363.1	UNICOM 122.8 (CTAF) 0
----------------------------	---------------------------	---	---------------------------------



3000	COVDA	fr 347°	JSSIE	VGSI and RNAV glidepath not coincident (VGSI Angle 3.00/TCH 33).
↑				REDME Procedure Turn NA
CATEGORY	A	B	C	D
LPV DA	1046-1¼	348 (400-1¼)		NA
INAV MDA	1700-1¼ 1002 (1100-1¼)	1700-1½ 1002 (1100-1½)		NA

NE-2, 11 JUN 2026 to 09 JUL 2026

NE-2, 11 JUN 2026 to 09 JUL 2026