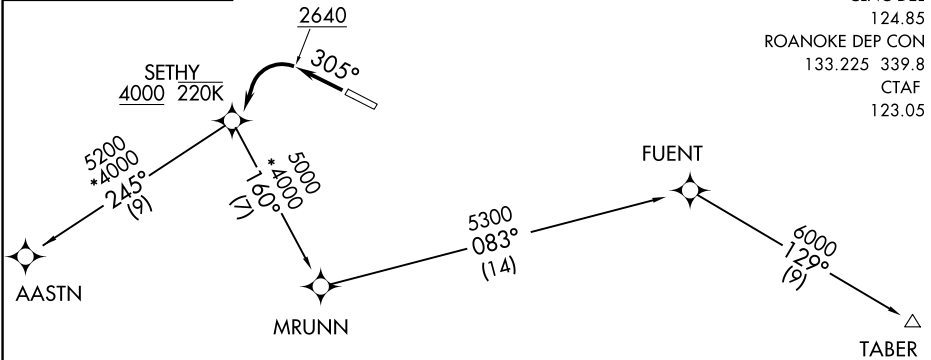


SETHY FIVE DEPARTURE (RNAV)

**TOP ALTITUDE:
6000**

AWOS-3
133.325
CLNC DEL
124.85
ROANOKE DEP CON
133.225 339.8
CTAF
123.05



- NOTE: GPS Required.
- NOTE: RNAV-1.
- NOTE: RADAR Required.
- NOTE: When in RADAR contact, vectors will be provided to filed/assigned route.

TAKEOFF MINIMUMS:

- Rwy 13: NA-ATC.
- Rwy 31: Standard with minimum climb of 300' per NM to 2640 then minimum climb of 230' per NM to 4000.

NOTE: Chart not to scale.

DEPARTURE ROUTE DESCRIPTION

TAKEOFF RUNWAY 31: Climb heading 305° to 2640, then left turn direct SETHY, cross SETHY at or above 4000, thence....

....On TABER transition. Maintain 6000. Expect clearance to filed altitude/flight level 10 minutes after departure.

....On AASTN transition. At AASTN fly heading 245° or assigned by ATC. Maintain 6000. RADAR vectors will be provided to filed route. Expect clearance to filed altitude/flight level within ten minutes after departure.

- AASTN TRANSITION (SETHY5.AASTN):
- TABER TRANSITION (SETHY5.TABER):

NE-3, 11 JUN 2026 to 09 JUL 2026

NE-3, 11 JUN 2026 to 09 JUL 2026