


|  |                        |   |
|--|------------------------|---|
| WAAS<br>CH <b>57913</b><br><b>W33A</b> | APP CRS<br><b>330°</b> | Rwy Ldg<br>TDZE <b>831</b><br>Apt Elev <b>833</b> |
|--|------------------------|---|

# RNAV (GPS) RWY 33

LAWRENCE RGNL (LWC)

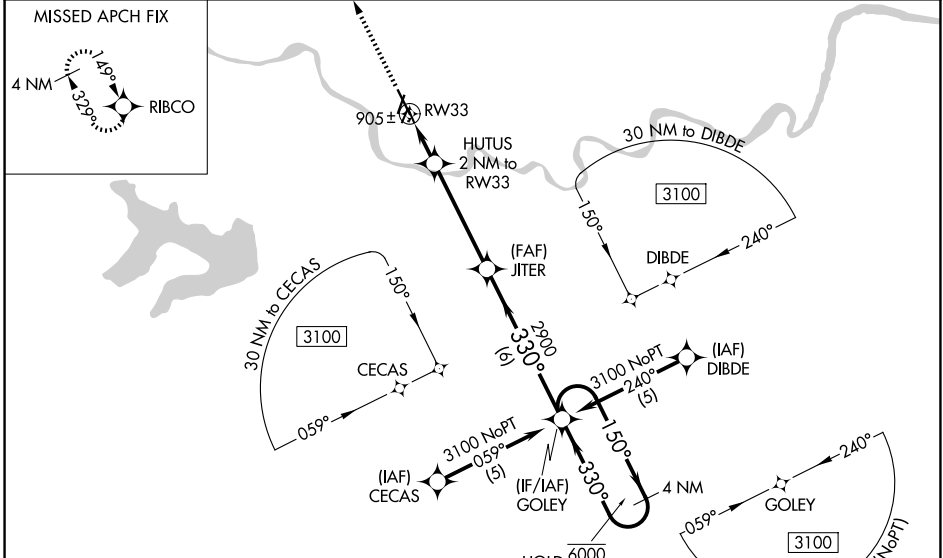
RNP APCH - GPS.

**⚠** For uncompensated Baro-VNAV systems, LNAV/VNAV NA below -16°C or above 54°C. Baro-VNAV and VDP NA when using TOP altimeter setting. When local altimeter setting not received, use TOP altimeter setting and increase LPV DA to 1083 feet, increase LNAV/VNAV DA to 1252 feet and all visibilities ¼ SM; increase all MDAs 60 feet and LNAV and Circling visibility Cat C ¼ SM.

MALSR 

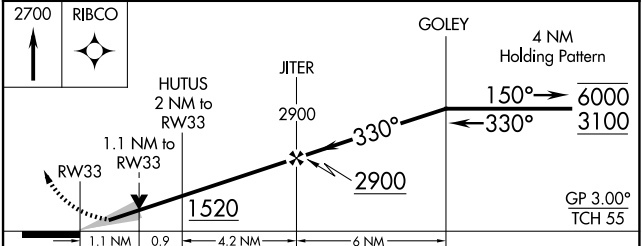
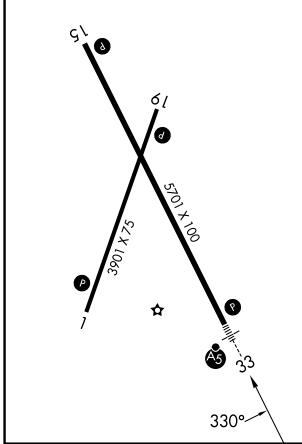
MISSED APPROACH: Climb to 2700 direct RIBCO and hold.

|                        |  |                                 |
|------------------------|--|---------------------------------|
| ASOS<br><b>121.225</b> | KANSAS CITY CENTER<br><b>123.8 343.7</b> | UNICOM<br><b>123.0 (CTAF) 0</b> |
|------------------------|--|---------------------------------|



|                 |                 |
|-----------------|-----------------|
| ELEV <b>833</b> | TDZE <b>831</b> |
|-----------------|-----------------|

REIL Rwy 1, 15, and 19 **1**  
MIRL Rwy 1-19 and 15-33 **1**



| CATEGORY     | A                     | B                     | C                       | D  |
|--------------|-----------------------|-----------------------|-------------------------|----|
| LPV DA       | 1031-¾                | 200 (200-¾)           |                         | NA |
| LNAV/VNAV DA | 1200-¾                | 369 (400-¾)           |                         | NA |
| LNAV MDA     | 1220-¾                | 389 (400-¾)           |                         | NA |
| CIRCLING     | 1420-1<br>587 (600-1) | 1480-1<br>647 (700-1) | 1620-2¼<br>787 (800-2¼) | NA |

NC-2, 11 JUN 2026 to 09 JUL 2026

NC-2, 11 JUN 2026 to 09 JUL 2026