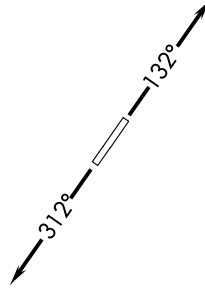
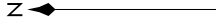


EC-1, 11 JUN 2026 to 09 JUL 2026

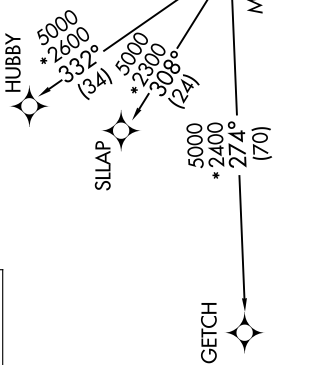
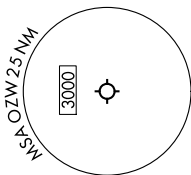
AWOS-3P
118.875
CLNC DEL
121.725
CTAF
123.0
DETROIT DEP CON
132.35 284.0



NOTE: Chart not to scale.

RNAV 1 - DME/DME/IRU or GPS.
RADAR required.

**TOP ALTITUDE:
ASSIGNED BY ATC**



TAKEOFF MINIMUMS:
Rwys 13, 31: Standard.

NOTE: Jet departures at/above 10000,
maintain 280K until advised by ATC.
NOTE: GETCH TRANSITION: For use by KMKE area
arrivals only, or as assigned by ATC.

DEPARTURE ROUTE DESCRIPTION

TAKEOFF RUNWAY 13: Climb on heading 132° or as assigned by ATC, thence....
TAKEOFF RUNWAY 31: Climb on heading 312° or as assigned by ATC, thence....

...for RADAR vectors to JAXII, then on track 323° to MIGGY, then on (transition).
Maintain 17000 or as assigned by ATC, expect filed altitude 10 minutes after departure.

GETCH TRANSITION (MIGGY3.GETCH):
HUBBY TRANSITION (MIGGY3.HUBBY):
SLLAP TRANSITION (MIGGY3.SLLAP):

EC-1, 11 JUN 2026 to 09 JUL 2026