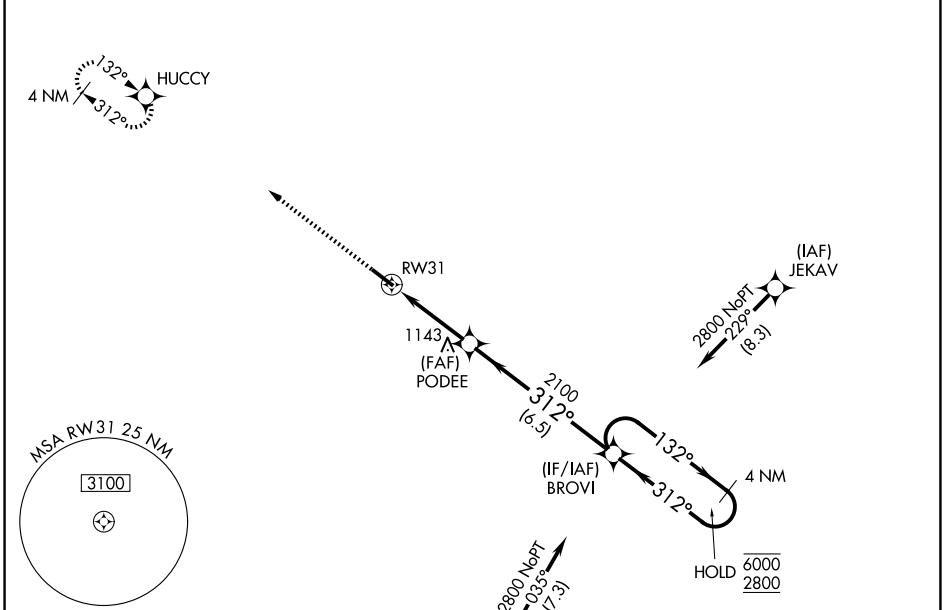


WAAS CH 99722 W31A	APP CRS 312°	Rwy Ldg 5002 TDZE 943 Apt Elev 962
--	------------------------	---

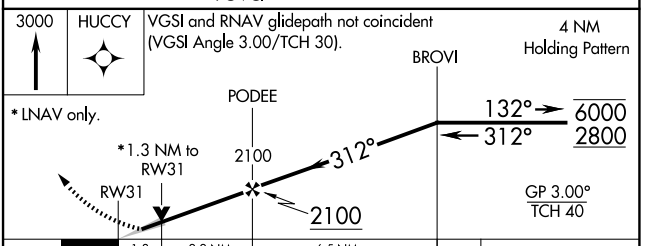
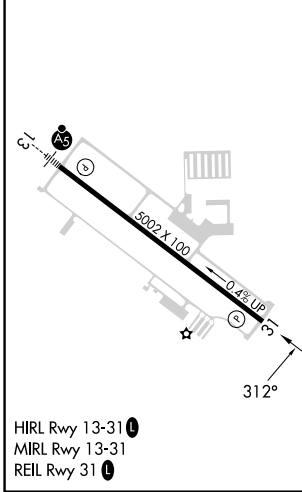
RNAV (GPS) RWY 31

LIVINGSTON COUNTY/SPENCER J HARDY (OZW)

RNP APCH - GPS.			MISSED APPROACH: Climb to 3000 direct HUCCY and hold.
<p>⚠ For uncompensated Baro-VNAV systems, LNAV/VNAV NA below -16°C or above 54°C.</p>			
AWOS-3P 118.875	DETROIT APP CON 132.35 284.0	CLNC DEL 121.725 (GCO)	UNICOM 123.0 (CTAF) 0



ELEV 962	TDZE 943
----------	----------



CATEGORY	A	B	C	D
LPV DA	1143- ³ / ₄		200 (200- ³ / ₄)	
LNAV/VNAV DA	1400-1 ³ / ₈		457 (500-1 ³ / ₈)	
LNAV MDA	1400-1	457 (500-1)	1400-1 ³ / ₈	457 (500-1 ³ / ₈)
CIRCLING	1420-1	458 (500-1)	1600-1 ³ / ₄ 638 (700-1 ³ / ₄)	1600-2 638 (700-2)

EC-1, 11 JUN 2026 to 09 JUL 2026

EC-1, 11 JUN 2026 to 09 JUL 2026