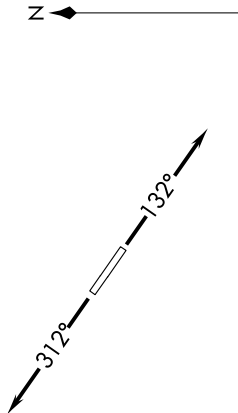


EC-1, 11 JUN 2026 to 09 JUL 2026

DETROIT DEP CON  
132.35 284.0  
AWOS-3P  
118.875  
CINC DEL  
121.725  
CTAF  
123.0

**TOP ALTITUDE:  
ASSIGNED BY ATC**

RNAV-1 DME/DME/IRU or GPS.  
RADAR required.



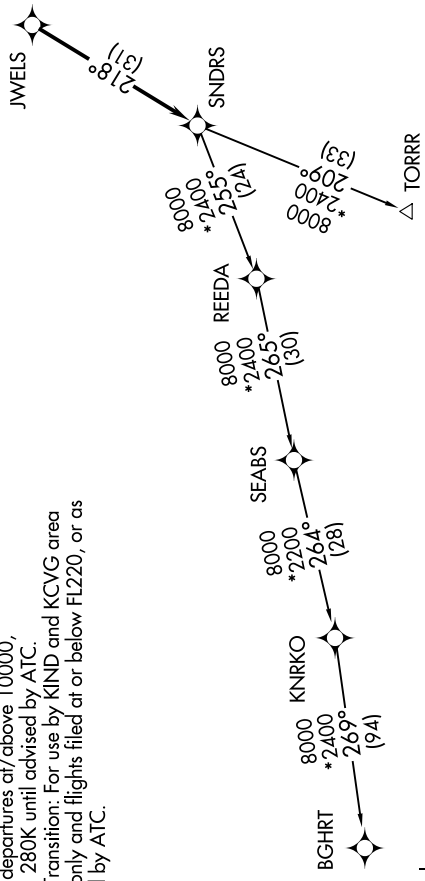
**DEPARTURE ROUTE DESCRIPTION**

TAKEOFF RUNWAY 13: Climb on heading 132° or as assigned by ATC, thence....  
TAKEOFF RUNWAY 31: Climb on heading 312° or as assigned by ATC, thence....

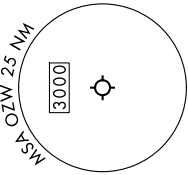
....for RADAR vectors to JWELS, then on track 218° to SNDRS, then on (transition). Maintain ATC assigned altitude, expect filed altitude 10 minutes after departure.

BGHRT TRANSITION (SNDRS3.BGHRT):  
TORRR TRANSITION (SNDRS3.TORRR):

NOTE: Turbojet departures at/above 10000, maintain 280K until advised by ATC.  
NOTE: TORRR Transition: For use by KIND and KCVG area arrivals only and flights filed at or below FL220, or as assigned by ATC.



**TAKEOFF MINIMUMS:**  
Rwys 13, 31 : Standard.



NOTE: Chart not to scale.

EC-1, 11 JUN 2026 to 09 JUL 2026