

(ZETTR4.ZETTR) 26022

ZETTR FOUR DEPARTURE (RNAV)

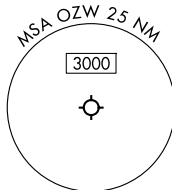
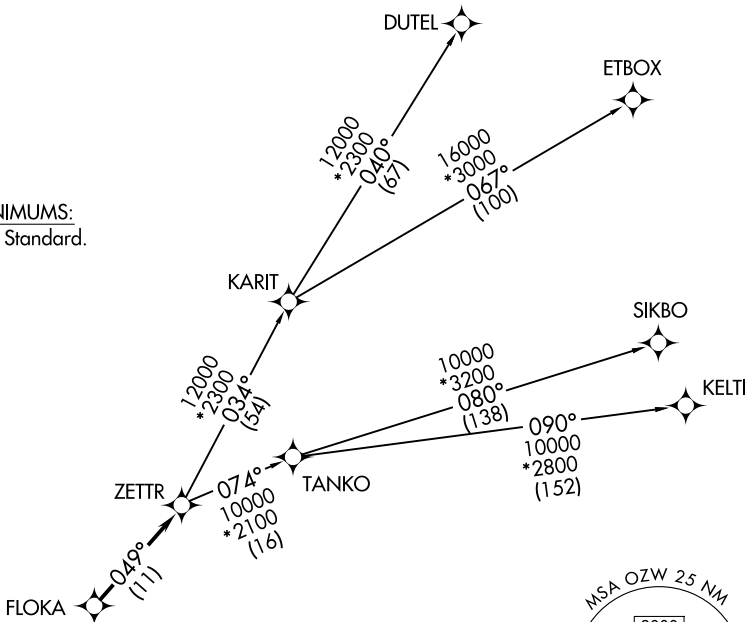
LIVINGSTON COUNTY/SPENCER J HARDY (OZW)
AL-5485 (FAA) HOWELL, MICHIGAN

DETROIT DEP CON
132.35 284.0
AWOS-3P
118.875
CLNC DEL
121.725
CTAF
123.0

RNAV 1 - DME/DME/IRU or GPS.
RADAR required.

**TOP ALTITUDE:
ASSIGNED BY ATC**

TAKEOFF MINIMUMS:
Rwys 13, 31: Standard.



DEPARTURE ROUTE DESCRIPTION

TAKEOFF RUNWAY 13: Climb on heading 132° or as assigned by ATC, thence....

TAKEOFF RUNWAY 31: Climb on heading 312° or as assigned by ATC, thence....

....for RADAR vectors to FLOKA, then on track 049° to ZETTR, then on (transition). Maintain ATC assigned altitude, expect filed altitude 10 minutes after departure.

DUTEL TRANSITION (ZETTR4.DUTEL):

ETBOX TRANSITION (ZETTR4.ETBOX):

KELTI TRANSITION (ZETTR4.KELTI):

SIKBO TRANSITION (ZETTR4.SIKBO):

TANKO TRANSITION (ZETTR4.TANKO):

NOTE: Turbojet departures at/above 10000, maintain 280K until advised by ATC.

NOTE: TANKO Transition: For use by CYYZ area arrivals only, or as assigned by ATC.

NOTE: Chart not to scale.

ZETTR FOUR DEPARTURE (RNAV)
(ZETTR4.ZETTR) 16MAY24

HOWELL, MICHIGAN
LIVINGSTON COUNTY/SPENCER J HARDY (OZW)

EC-1, 11 JUN 2026 to 09 JUL 2026

EC-1, 11 JUN 2026 to 09 JUL 2026