

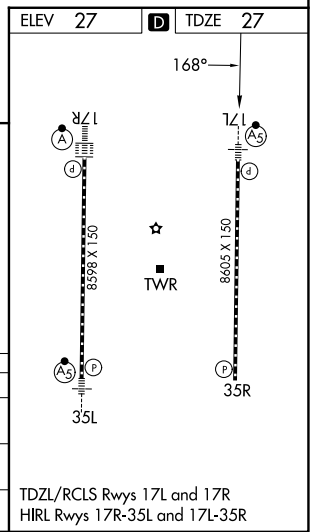
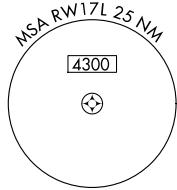
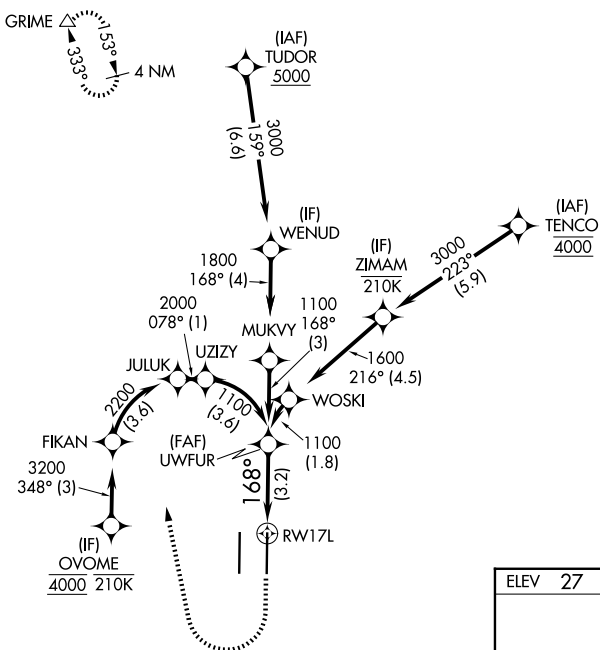
APP CRS	Rwy Ldg	<b>8605</b>
<b>168°</b>	TDZE	<b>27</b>
	Apt Elev	<b>27</b>

# RNAV (RNP) Z RWY 17L

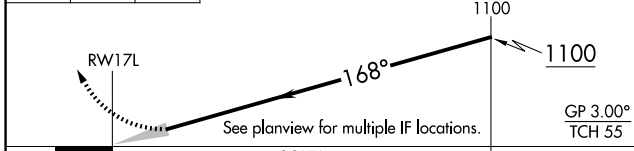
SACRAMENTO INTL (SMF)

RNP AR APCH-GPS.	MALS R	MISSED APPROACH: Climb to 500 then right turn to 3000 direct GRIME and hold. * Missed approach requires minimum climb of 290 feet per NM to 3000. # Missed approach requires minimum climb of 300 feet per NM to 3000.
▼ For uncompensated Baro-VNAV systems, procedure NA below -2°C or above 54°C. For inop ALS, increase RNP 0.12 all Cats visibility to RVR 4000; increase RNP 0.30 all Cats visibility to RVR 4500.		

D-ATIS	NORCAL APP CON	CAPITOL TOWER	GND CON
<b>126.75</b>	<b>125.4 259.1 (W-NE) 125.25 257.9 (SW) 127.4 317.5 (E-SE)</b>	<b>125.7 256.7</b>	<b>121.7 256.7</b>



500 3000 GRIME VGSI and RNAV glidepath not coincident (VGSI Angle 3.00/TCH 64).



CATEGORY	A	B	C	D
RNP 0.12 DA#		277/24	250 (300-½)	
RNP 0.30 DA*		339/24	312 (400-½)	

## AUTHORIZATION REQUIRED

TDZL/RCLS Rwy 17L and 17R  
HIRL Rwy 17R-35L and 17L-35R

SW-2, 11 JUN 2026 to 09 JUL 2026

SW-2, 11 JUN 2026 to 09 JUL 2026