

# RNAV (RNP) Z RWY 35L

SACRAMENTO INTL (SMF)

APP CRS	Rwy Ldg	<b>8598</b>
<b>348°</b>	TDZE	<b>24</b>
	Apt Elev	<b>27</b>

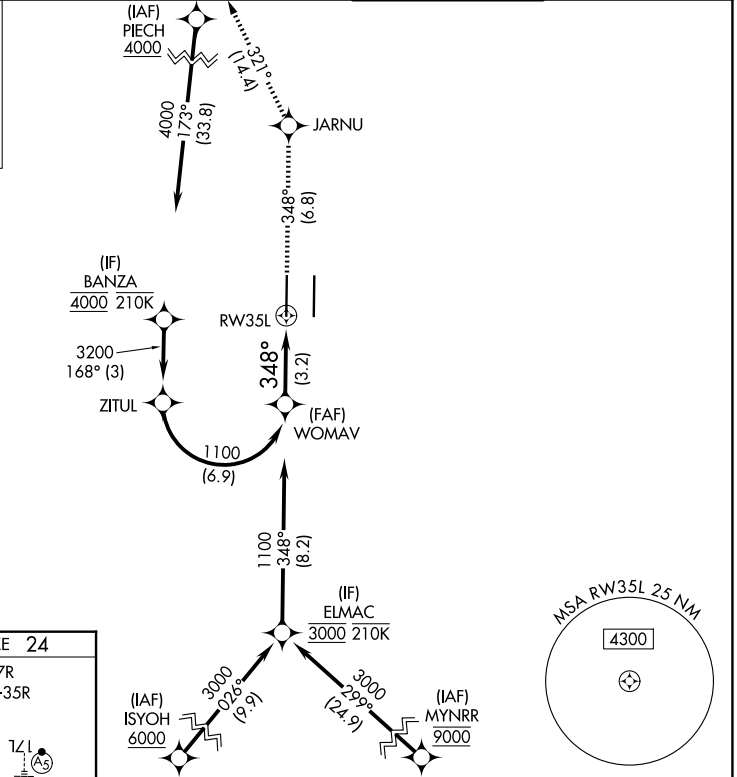
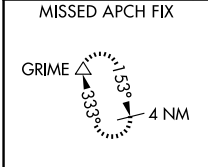
RNP AR APCH-GPS.

▼ For uncompensated Baro-VNAV systems, procedure NA below -2°C or above 54°C. For inop ALS, increase RNP 0.12 all Cats visibility to RVR 4500; increase RNP 0.30 all Cats visibility to RVR 5500.

MALSRR

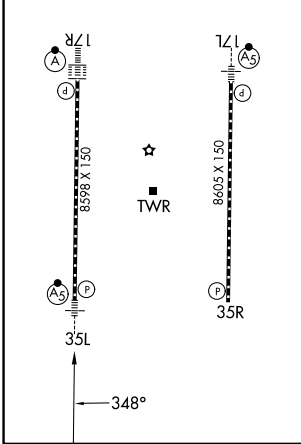
MISSED APPROACH: Climb to 2000 on track 348° to JARNU and track 321° to GRIME and hold.

D-ATIS	NORCAL APP CON	CAPITOL TOWER	GND CON
<b>126.75</b>	<b>125.4 259.1 (W-NE) 125.25 257.9 (SW) 127.4 317.5 (E-SE)</b>	<b>125.7 256.7</b>	<b>121.7 256.7</b>



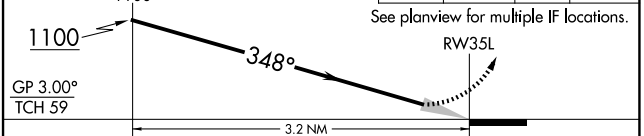
ELEV 27 **D** TDZE 24

TDZL/RCLS Rwy's 17L and 17R  
HIRL Rwy's 17R-35L and 17L-35R



VGSI and RNAV glidepath not coincident (VGSI Angle 3.00/TCH 76).

2000	JARNU	GRIME
↑ tr 348°	✧	tr 321° △



GP 3.00°				
TCH 59				
CATEGORY	A	B	C	D
RNP 0.12 DA		318/24	294 (300-½)	
RNP 0.30 DA		382/30	358 (400-¾)	

**AUTHORIZATION REQUIRED**

SW-2, 11 JUN 2026 to 09 JUL 2026

SW-2, 11 JUN 2026 to 09 JUL 2026