

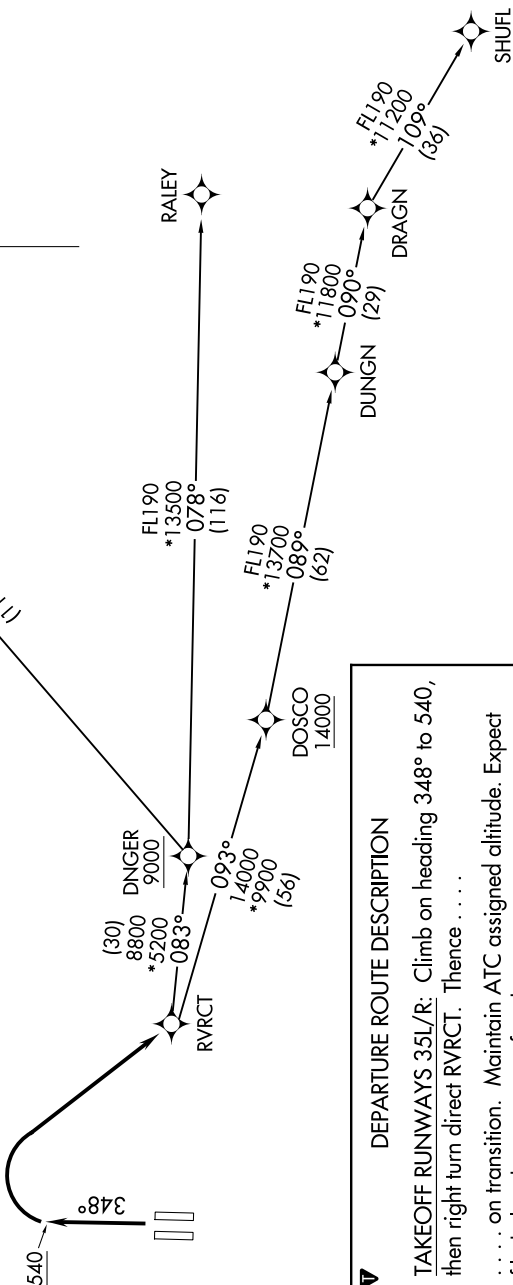
9200 2000 60 01 02 02020000 11 'Z-MS

**TOP ALTITUDE:  
ASSIGNED BY ATC**

RNAV - DME/DME/IRU or GPS  
RADAR required for non-GPS equipped aircraft.

**TAKEOFF MINIMUMS**

Rwys 35L/R: Standard with minimum climb of 500' per NM to 540.



**DEPARTURE ROUTE DESCRIPTION**

TAKEOFF RUNWAYS 35L/R: Climb on heading 348° to 540, then right turn direct RVRCT. Thence . . . . .  
 . . . . . on transition. Maintain ATC assigned altitude. Expect filed altitude 5 minutes after departure.  
 MACUS TRANSITION (RVRCT4.MACUS)  
 RALEY TRANSITION (RVRCT4.RALEY)  
 SHUFL TRANSITION (RVRCT4.SHUFL)

NOTE: Chart not to scale.