

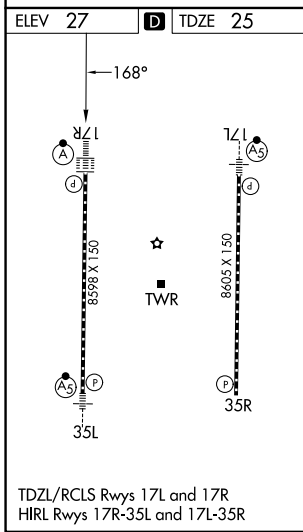
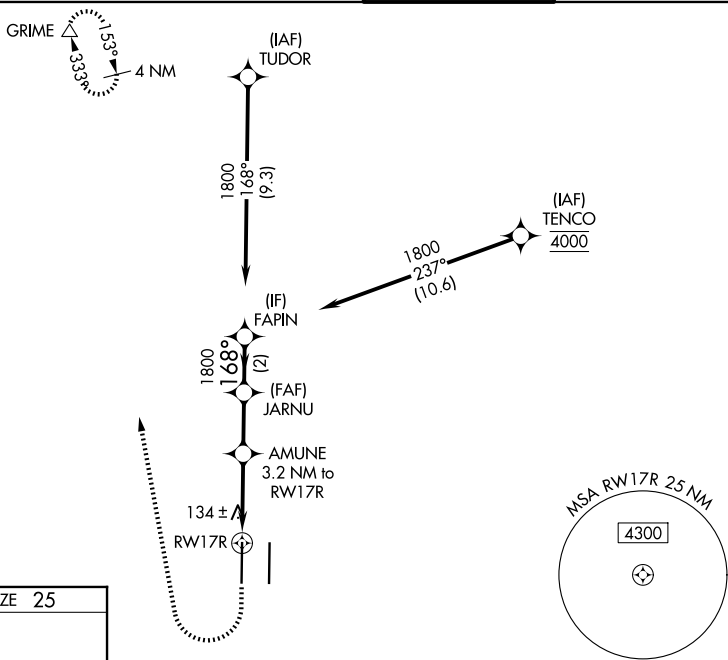
WAAS CH <b>65728</b> <b>W17A</b>	APP CRS <b>168°</b>	Rwy Ldg TDZE Apt Elev	<b>8598</b> <b>25</b> <b>27</b>
--	------------------------	-----------------------------	---------------------------------------

# RNAV (GPS) Y RWY 17R

SACRAMENTO INTL (SMF)

RNP APCH - GPS.	ALSF-2 	MISSED APPROACH: Climb to 500 then climbing right turn to 2000 direct GRIME and hold.
-----------------	------------	---

D-ATIS <b>126.75</b>	NORCAL APP CON <b>125.4 259.1 (W-NE) 125.25 257.9 (SW) 127.4 317.5 (E-SE)</b>	CAPITOL TOWER <b>125.7 256.7</b>	GND CON <b>121.7 256.7</b>
-------------------------	--	-------------------------------------	-------------------------------



500	2000	GRIME	VGSIs and RNAV glidepath not coincident (VGSi Angle 3.00/TCH 72).			
		AMUNE 3.2 NM to RWY17R	JARNU	FAPIN		
		1 NM to RWY17R	1800	1800	GP 3.00° TCH 57	
		1 NM	2.3 NM	2.2 NM	2 NM	
CATEGORY	A	B	C	D		
LPV DA	225/18		200 (200-½)			
LNAV/VNAV DA	323/24		298 (300-½)			
LNAV MDA	400/24		375 (400-½)		400/35	375 (400-¾)
CIRCLING	440-1 413 (500-1)	480-1 453 (500-1)	480-1½ 453 (500-1½)	580-2 553 (600-2)		

SW-2, 11 JUN 2026 to 09 JUL 2026

SW-2, 11 JUN 2026 to 09 JUL 2026