

RNAV (GPS) Y RWY 35R

SACRAMENTO INTL (SMF)

APP CRS	Rwy Ldg	8605
348°	TDZE	24
	Apt Elev	27

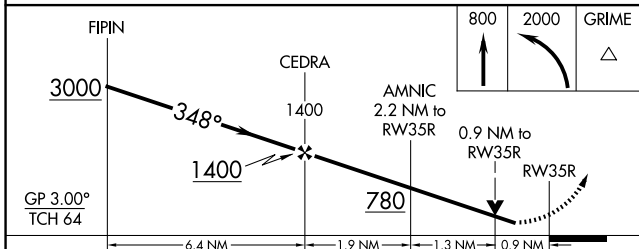
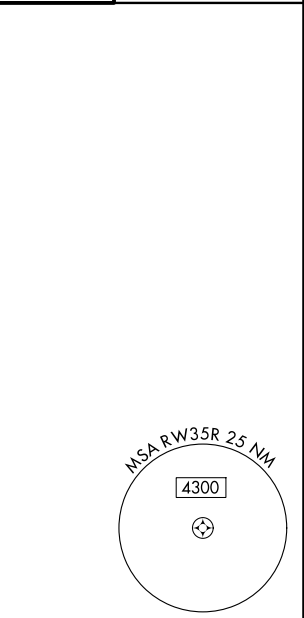
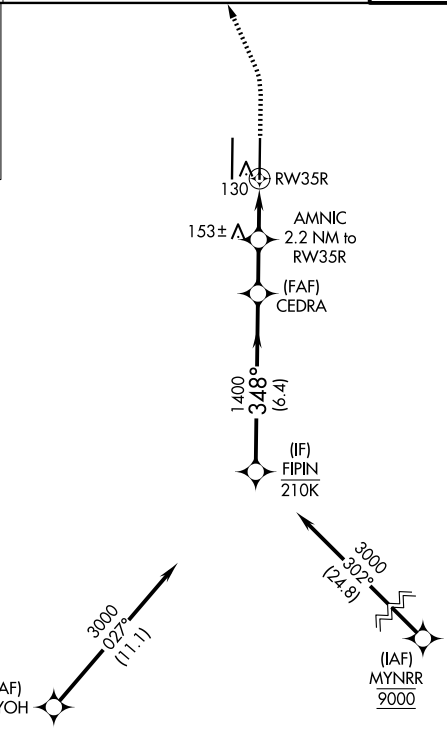
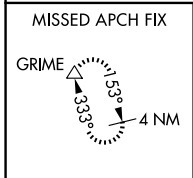
RNP APCH-GPS.

▼ Circling NA west of Rwy 17L-35R. Rwy 35R helicopter visibility reduction below 3/4 SM NA. For uncompensated Baro-VNAV systems, LNAV/VNAV NA below -2°C or above 54°C.

▲

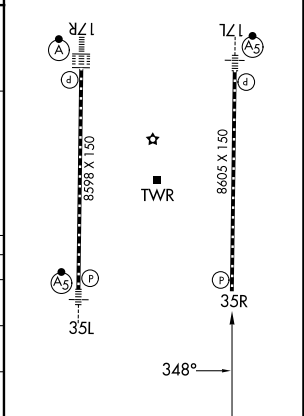
MISSED APPROACH: Climb to 800 then climbing left turn to 2000 direct GRIME and hold.

D-ATIS	NORCAL APP CON	CAPITOL TOWER	GND CON
126.75	125.4 259.1 (W-NE) 125.25 257.9 (SW) 127.4 317.5 (E-SE)	125.7 256.7	121.7 256.7



ELEV	27	TDZE	24
TDZL/RCLS Rwy 17L and 17R			
HIRL Rwy 17R-35L and 17L-35R			

CATEGORY	A	B	C	D
LNAV/VNAV DA		311/45	287 (300-7%)	
LNAV MDA		380/55	356 (400-1)	
CIRCLING	400-1 373 (400-1)	480-1 453 (500-1)	480-1½ 453 (500-1½)	840-2¾ 813 (900-2¾)



SW-2, 11 JUN 2026 to 09 JUL 2026

SW-2, 11 JUN 2026 to 09 JUL 2026