

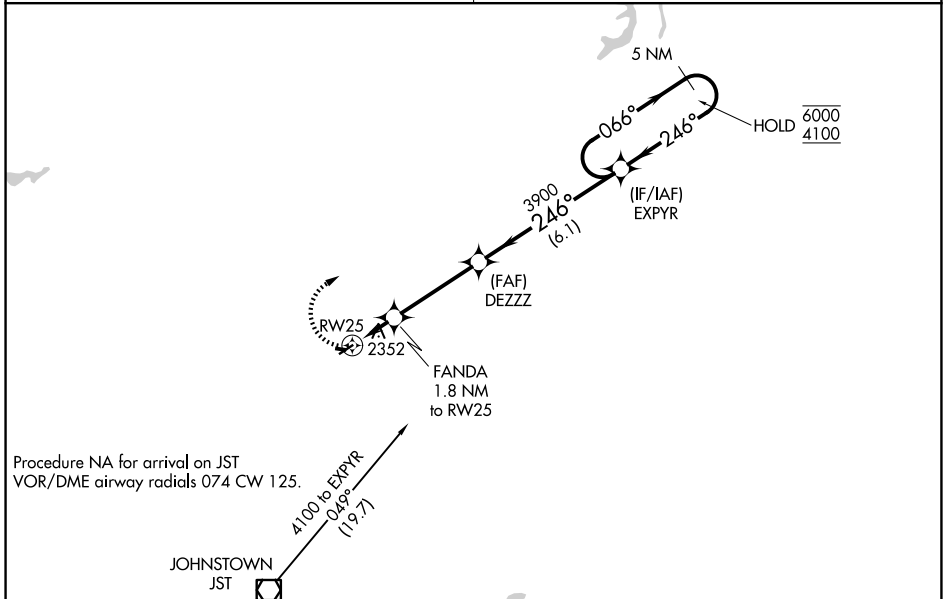
APP CRS	Rwy Ldg	3204
246°	TDZE	2098
	Apt Elev	2099

RNAV (GPS) RWY 25

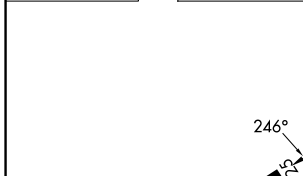
EBENSBURG (9G8)

RNP APCH - GPS.		MISSED APPROACH: Climbing right turn to 4100 direct EXPYR and hold.
<p>▼ Procedure NA at night. Rwy 25 helicopter visibility reduction below 1 SM NA.</p> <p>▲ NA Obtain local altimeter setting on CTAF; when not received, use Johnstown altimeter setting and increase all MDA 60 feet and visibility Cat C ¼ SM.</p>		

JOHNSTOWN APP CON ★ 121.2 299.2	UNICOM 122.8 (CTAF) 0
---	---------------------------------



ELEV 2099	TDZE 2098
-----------	-----------



4100	EXPYR	Visual Segment - Obstacles.	5 NM
			Holding Pattern
		FANDA 1.8 NM to RW25	DEZZZ 3900
		RW25	EXPYR 4100
		2720	066° → 6000
		← 246°	4100
		1.8 NM	3.6 NM
		6.1 NM	
CATEGORY	A	B	C
LNVA MDA	2620-1	522 (600-1)	2620-1½ 522 (600-1½)
			NA

NE-4, 11 JUN 2026 to 09 JUL 2026

NE-4, 11 JUN 2026 to 09 JUL 2026