

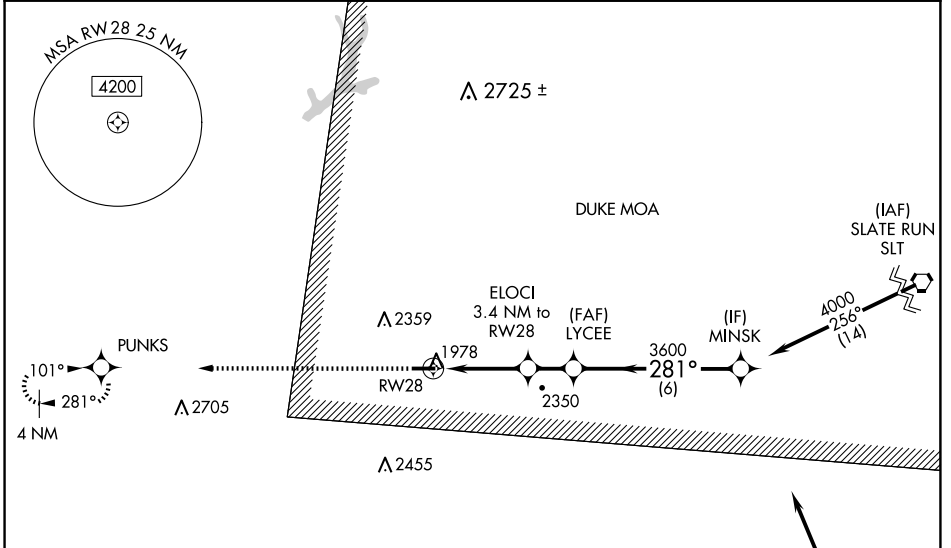
APP CRS	Rwy Idg	4300
281°	TDZE	1934
	Apt Elev	1934

RNAV (GPS) RWY 28

ST MARYS MUNI (OYM)

RNP APCH - GPS.		MALS 	MISSED APPROACH: Climb to 4000 direct PUNKS and hold.
	Rwy 28 helicopter visibility reduction below 3/4 SM NA. Inop table does not apply to LNAV Cat A. VDP NA when using Bradford altimeter setting. When local altimeter setting not received, use Bradford altimeter setting and increase all MDA 240 feet, LNAV visibility Cats B/C/D 1/2 SM, and Circling visibility Cats B/C 1/2 SM. For inop ALS increase LNAV visibility Cat C/D to 2 1/2 SM. For inop ALS when using Bradford altimeter setting, increase LNAV visibility Cat C/D to 3 SM.		

AWOS-3P 118.05	CLEVELAND CENTER 126.725 291.65	ALTOONA CLNC DEL 122.4	UNICOM 122.7 (CTAF) 0
--------------------------	---	----------------------------------	---------------------------------



ELEV 1934	TDZE 1934	4000 PUNKS 281° 0.7% UP 4300 X 75 28	
RW28 2.5 NM to RW28 1 NM 1.6 NM 6 NM		ELOCI 3.4 NM to RW28 3040 3.04° TCH 40	LYCEE 3600
		MINSK	4000

CATEGORY	A	B	C	D
LNAV MDA	2760-1	826 (900-1)	2760-2	826 (900-2)
CIRCLING	2760-1 1/4	826 (900-1 1/4)	2760-2 1/2 826 (900-2 1/2)	2840-3 906 (1000-3)

NE-4, 11 JUN 2026 to 09 JUL 2026

NE-4, 11 JUN 2026 to 09 JUL 2026