

CLTCH THREE DEPARTURE (RNAV)

NE-3, 11 JUN 2026 to 09 JUL 2026

TOP ALTITUDE:
3000

P-568



P-56A



DEPARTURE ROUTE DESCRIPTION

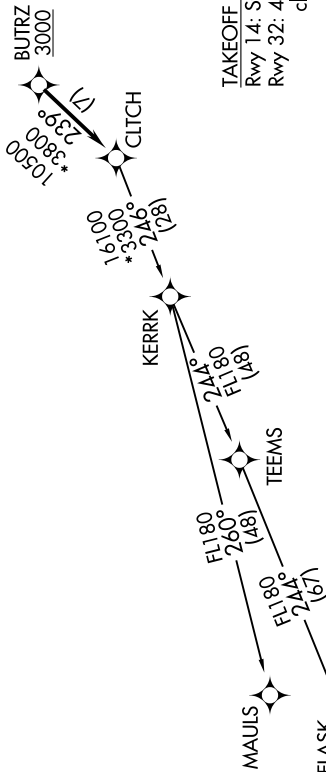
Climb on heading assigned by ATC, expect RADAR vectors to BUTRZ, then on track 239° to CLTCH, thence....

....on assigned transition, maintain altitude assigned by ATC, expect clearance to filed altitude within ten (10) minutes after departure.

FLASK TRANSITION (CLTCH3.FLASK)
MAULS TRANSITION (CLTCH3.MAULS)

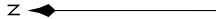
- POTOMAC DEP CON 118.95 257.2
- ATIS 128.175
- CLNC DEL 351.8
- GND CON 121.9 351.8
- DAVISON TOWER ★ 124.275 (CTAF) 229.4

- NOTE: RNAV 1.
- NOTE: RADAR required.
- NOTE: DME/DME/IRU or GPS required.
- NOTE: Turbo-jets only.



TAKEOFF MINIMUMS:

- Rwy 14: Standard.
- Rwy 32: 400-2 or Standard with minimum climb of 300' per NM to 500'.



NOTE: Chart not to scale.

CLTCH THREE DEPARTURE (RNAV)

(CLTCH3.CLTCH) 31DEC20

NE-3, 11 JUN 2026 to 09 JUL 2026