

FORT BELVOIR, VIRGINIA

# RNAV (GPS) RWY 14

APCH CRS	Rwy Idg	4930
142°	TDZE	60
	Arprt Elev	74

(USA)

DAVISON AAF (FORT BELVOIR) (KDAV)

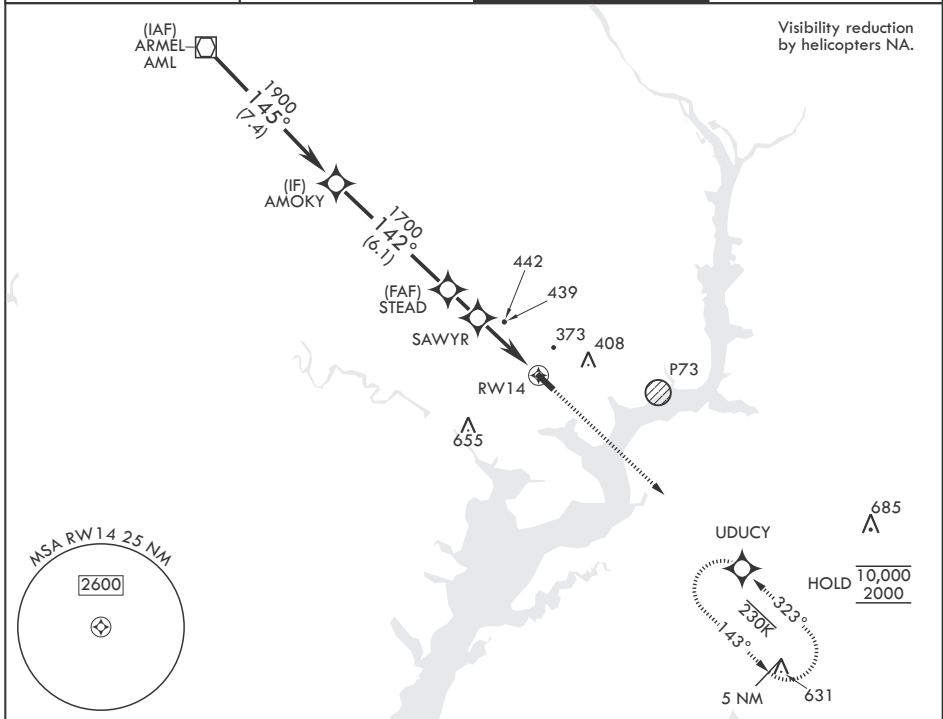
RNP APCH-GPS

MISSED APPROACH: Climb to 2000  
direct UDCY and hold.

▼ \* If local altimeter setting not received, use Ronald Reagan Washington National altimeter setting. VDP NA with Ronald Reagan Washington Natl altimeter setting.

ATIS <b>128.175</b>	POTOMAC APP CON <b>118.95 319.1</b>	TOWER* <b>124.275 (CTAF) 229.4</b>	GND CON <b>121.9 351.8</b>
------------------------	--	---------------------------------------	-------------------------------

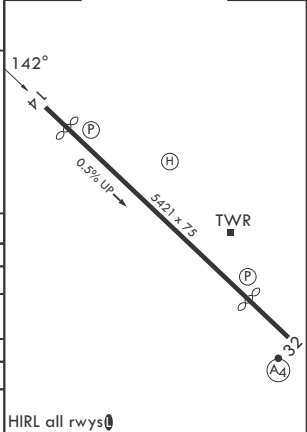
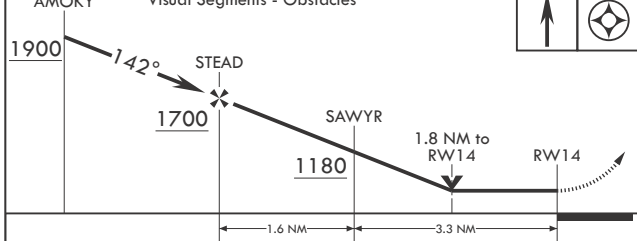
Visibility reduction by helicopters NA.



NE-3, 11 JUN 2026 to 09 JUL 2026

NE-3, 11 JUN 2026 to 09 JUL 2026

AMOKY	Visual Segments - Obstacles	2000	UDCY	ELEV 74	TDZE 60
-------	-----------------------------	------	------	---------	---------



CATEGORY	A	B	C	D
LNAV MDA	700/55	640 (700-1)	700-1¾	640 (700-1¾)
CIRCLING	700-1 626 (700-1)	720-1 646 (700-1)	760-2 686 (700-2)	1000-3 926 (1000-3)
*RONALD REAGAN WASHINGTON NATIONAL ALTIMETER SETTING MINIMUMS				
LNAV MDA*	740/55	680 (700-1)	740-1⅞	680 (700-1⅞)
CIRCLING*	740-1 666 (700-1)	760-1 686 (700-1)	800-2 726 (800-2)	1043-3 966 (1000-3)

FORT BELVOIR, VIRGINIA  
Amdt 4 16APR26

38°43'N - 77°11'W

DAVISON AAF (FORT BELVOIR) (KDAV)

# RNAV (GPS) RWY 14