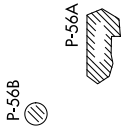


SCRAM SIX DEPARTURE (RNAV)

NE-3, 11 JUN 2026 to 09 JUL 2026

TOP ALTITUDE:
3000



DEPARTURE ROUTE DESCRIPTION

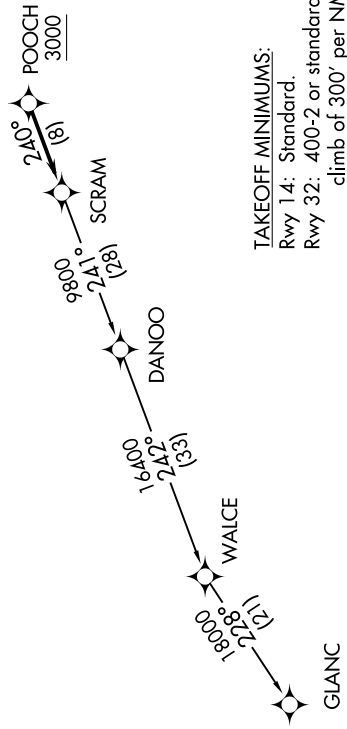
Climb on heading assigned by ATC, expect RADAR vectors to POOCH, then on track 240° to SCRAM, thence....

...as depicted. Maintain 3000, expect clearance to filed altitude within ten (10) minutes after departure.

GLANC TRANSITION (SCRAM6.GLANC):

ATIS 128.175
 CINC DEL 351.8
 GND CON 121.9 351.8
 DAVISON TOWER ★ 124.275 (CTAF) 229.4
 POTOMAC DEP CON 118.95 257.2

NOTE: RNAV 1.
 NOTE: RADAR required.
 NOTE: DME/DME/IRU or GPS required.
 NOTE: Turbo-jets only.



TAKEOFF MINIMUMS:
 Rwy 14: Standard.
 Rwy 32: 400-2 or standard with minimum climb of 300' per NM to 500.



NOTE: Chart not to scale.

NE-3, 11 JUN 2026 to 09 JUL 2026