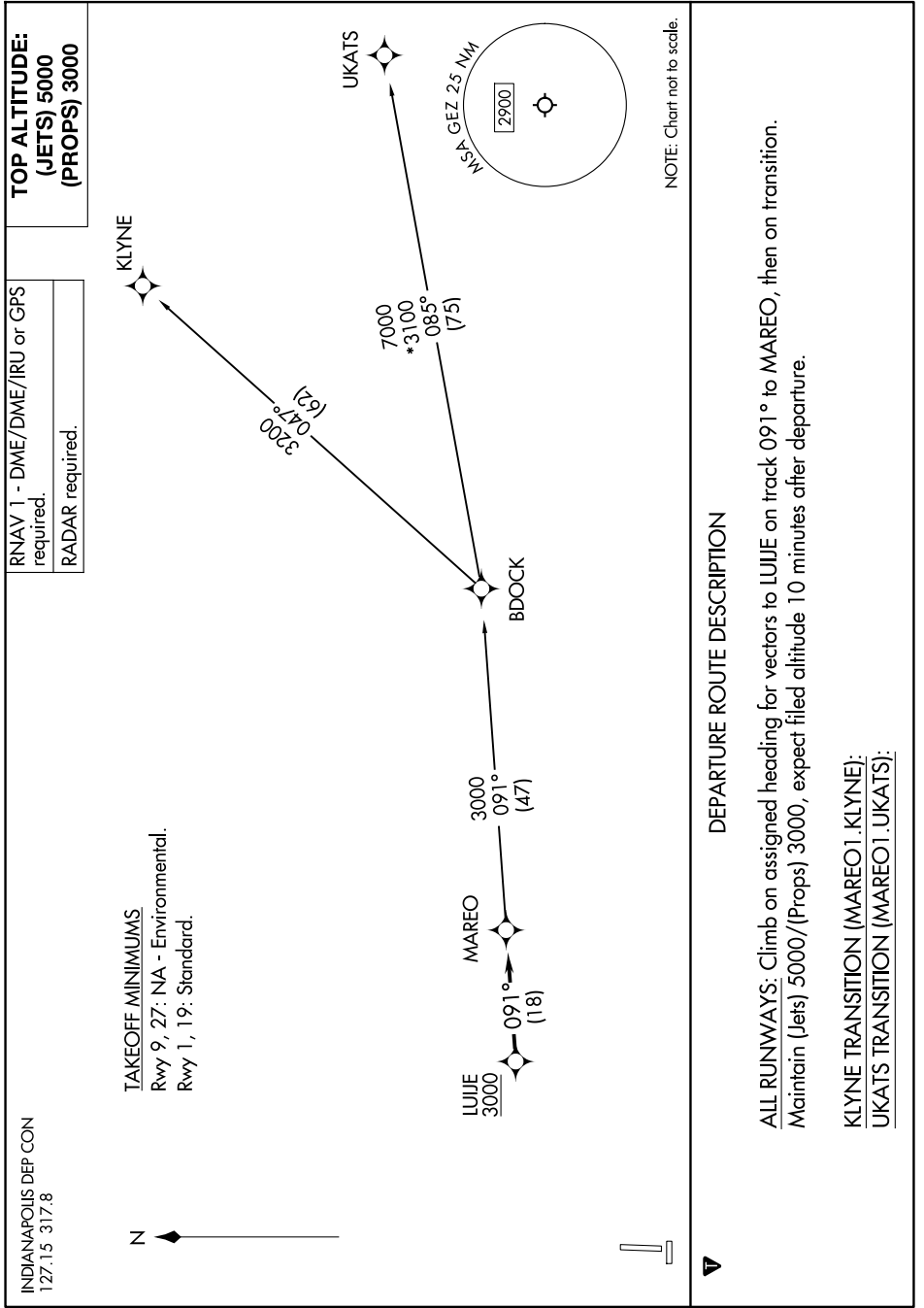


MAREO ONE DEPARTURE (RNAV)

SHELBYVILLE, INDIANA

EC-2, 11 JUN 2026 to 09 JUL 2026



INDIANAPOLIS DEP CON
127.15 317.8

TAKEOFF MINIMUMS
Rwy 9, 27: NA - Environmental.
Rwy 1, 19: Standard.

RNAV 1 - DME/DME/IRU or GPS required.
RADAR required.

TOP ALTITUDE:
(JETS) 5000
(PROPS) 3000

NOTE: Chart not to scale.

DEPARTURE ROUTE DESCRIPTION

ALL RUNWAYS: Climb on assigned heading for vectors to LUJJE on track 091° to MAREO, then on transition. Maintain (Jets) 5000/(Props) 3000, expect filed altitude 10 minutes after departure.

KLYNE TRANSITION (MAREO1.KLYNE):
UKATS TRANSITION (MAREO1.UKATS):

MAREO ONE DEPARTURE (RNAV)

(MAREO1.MAREO) 14MAY26

SHELBYVILLE, INDIANA
SHELBYVILLE MUNI (GEZ)

EC-2, 11 JUN 2026 to 09 JUL 2026