

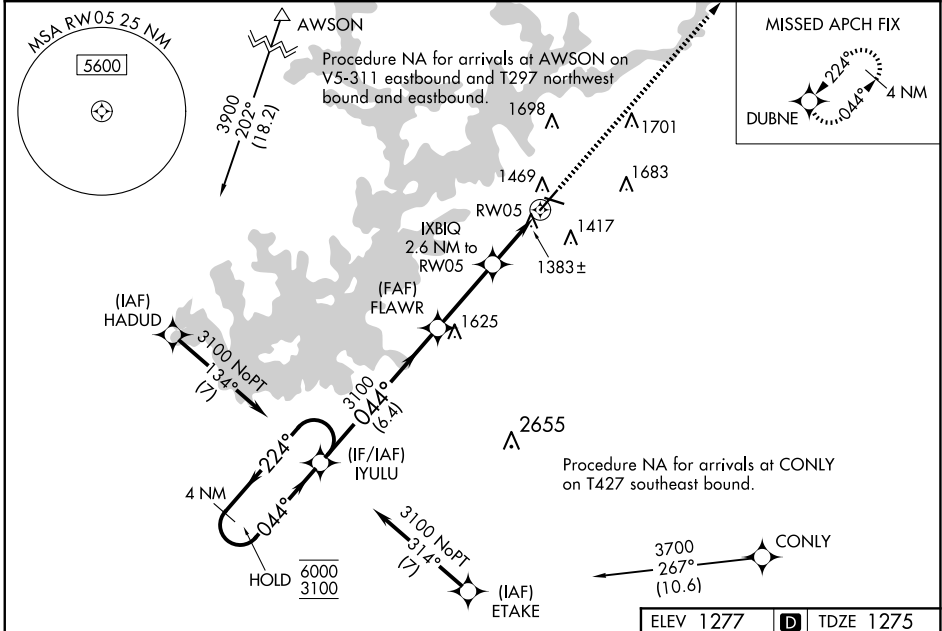
WAAS CH 42605 W05A	APP CRS 044°	Rwy Ldg TDZE Apt Elev	5370 1275 1277
--	------------------------	-----------------------------	---

RNAV (GPS) RWY 5

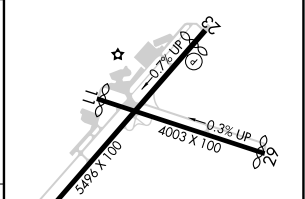
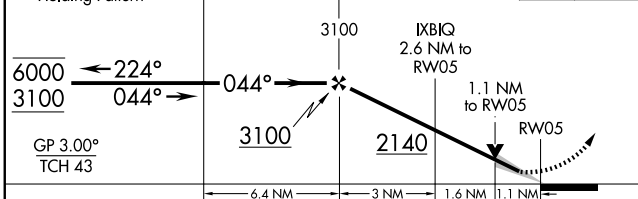
LEE GILMER MEML (GVL)

RNP APCH - GPS.	MALSRL 	MISSED APPROACH: Climb to 3500 direct DUBNE and hold.
 Circling to Rwy 11, 29 NA at night. For uncompensated Baro-VNAV systems, LNAV/VNAV NA below -6°C or above 54°C. For inop ALS, increase LNAV/VNAV all Cats visibility to 7/8 SM, increase LNAV Cats C and D visibility to 1 SM.		

ASOS 126.475	ATLANTA APP CON* 132.475 291.1	UNICOM 123.075 (CTAF)
------------------------	--	---------------------------------



ELEV 1277		TDZE 1275
-----------	--	-----------



CATEGORY	A	B	C	D
LPV DA		1475-1/2	200 (200-1/2)	
LNAV/VNAV DA		1551-1/2	276 (300-1/2)	
LNAV MDA	1640-1/2	365 (400-1/2)	1640-5/8	365 (400-5/8)
CIRCLING	1780-1 503 (600-1)	2000-1 723 (800-1)	2000-2 723 (800-2)	2020-2 1/2 743 (800-2 1/2)

HIRL Rwy 5-23

SE-4, 11 JUN 2026 to 09 JUL 2026

SE-4, 11 JUN 2026 to 09 JUL 2026