

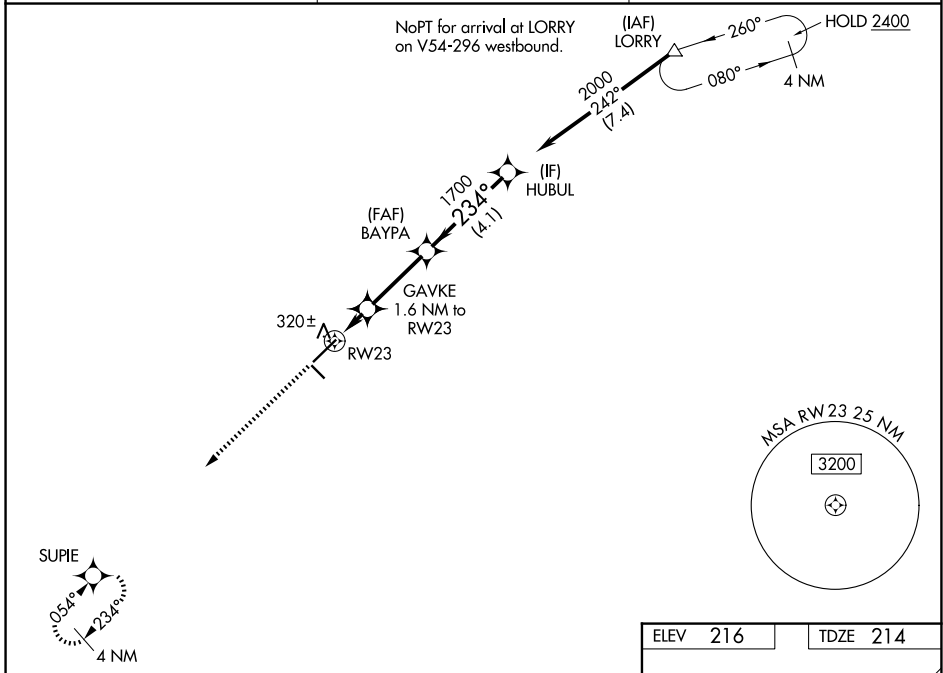
WAAS CH <b>61023</b> <b>W23A</b>	APP CRS <b>234°</b>	Rwy Ldg TDZE <b>214</b> Apt Elev <b>216</b>	<b>6316</b>
--	------------------------	---	-------------

# RNAV (GPS) RWY 23

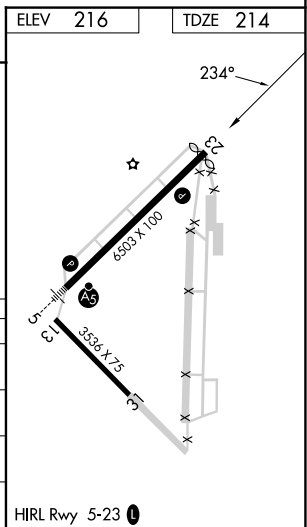
LAURINBURG/MAXTON (MEB)

RNP APCH-GPS.	MISSED APPROACH: Climb to 2000 direct SUPIE and hold.
<p>▼ Circling to Rwy 13 and 31 NA at night. Rwy 23 helicopter visibility reduction below 3/4 SM NA. For uncompensated Baro-VNAV systems, LNAV/VNAV NA below -11°C or above 54°C.</p> <p>▲</p>	

ASOS <b>134.125</b>	FAYETTEVILLE APP CON <b>127.8 343.725</b>	UNICOM <b>122.8 (CTAF) 0</b>
------------------------	--	---------------------------------



2000	SUPIE				
↑	☆				
CATEGORY	A	B	C	D	
LPV DA		483-7/8	269 (300-7/8)		
LNAV/VNAV DA		483-7/8	269 (300-7/8)		
LNAV MDA		580-1	366 (400-1)		
CIRCLING	740-1	524 (600-1)	780-1 1/2 564 (600-1 1/2)	1020-2 1/2 804 (900-2 1/2)	



SE-2, 11 JUN 2026 to 09 JUL 2026

SE-2, 11 JUN 2026 to 09 JUL 2026