

LOC/DME I-PGV 110.7 Chan 44	APP CRS 197°	Rwy Ldg 6505 TDZE 25 Apt Elev 26
---	------------------------	---

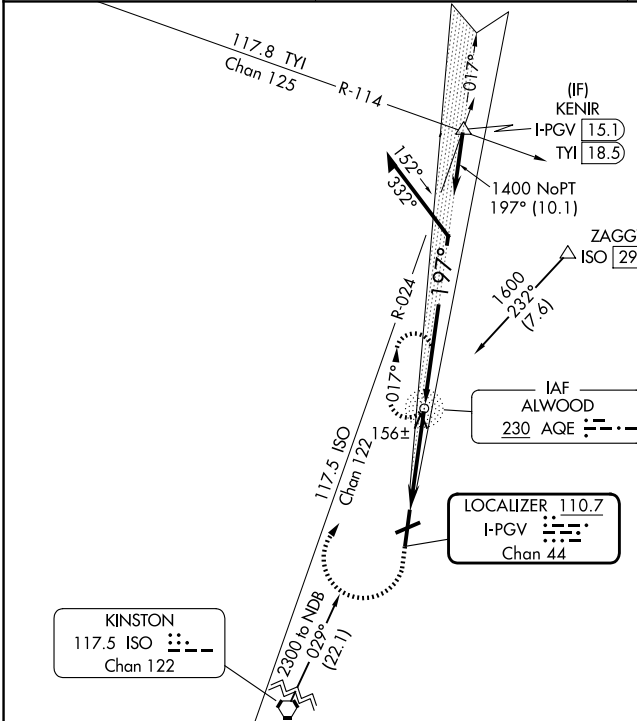
ILS Z or LOC Z RWY 20

PITT-GREENVILLE (PGV)

NA ADF required. VDP NA with Washington altimeter setting. When local altimeter setting not received use Washington altimeter and increase S-ILS 20 DA to 298 feet; increase all MDAs 60 feet and S-LOC 20 visibility Cat C/D 1/2 SM, and Circling visibility Cat D 1/4 SM. For inop ALS when using Washington altimeter setting, increase S-ILS 20 all Cats visibility 3/8 SM, and S-LOC 20 visibility Cat A/B 1/4 SM. Inop table does not apply to S-ILS all Cats. Rwy 20 helicopter visibility reduction below 3/4 SM NA. For inop ALS, increase S-LOC 20 visibility Cat A/B 1/4 SM, Cat C/D 3/8 SM.

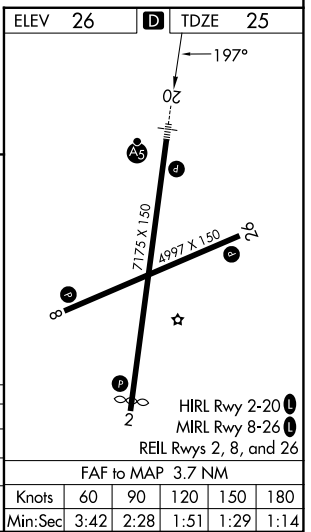
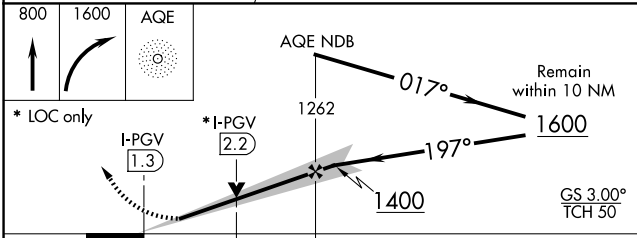
MALSR
MISSED APPROACH: Climb to 800 then climbing right turn to 1600 direct AGE NDB and hold.

AWOS-3 128.425	WASHINGTON CENTER 123.85 279.65	UNICOM 122.8 (CTAF)
--------------------------	---	-------------------------------



Procedure NA for arrivals at ZAGGY on V472 southwest bound.

MSA AGE 25 NM
3100



CATEGORY	A	B	C	D
S-ILS 20		257-3/4	231 (300-3/4)	
S-LOC 20		420-3/4	394 (400-3/4)	
CIRCLING	600-1	620-1	700-2	800-2 1/2
	574 (600-1)	594 (600-1)	674 (700-2)	774 (800-2 1/2)

SE-2, 11 JUN 2026 to 09 JUL 2026

SE-2, 11 JUN 2026 to 09 JUL 2026