

WAAS CH 87011 W20A	APP CRS 197°	Rwy Ldg TDZE Apt Elev 6505 25 26
--	------------------------	--

RNAV (GPS) RWY 20

PITT-GREENVILLE (PGV)

RNP APCH - GPS.

⚠ Baro-VNAV NA when using Washington altimeter setting. For uncompensated Baro-VNAV systems, LNAV/VNAV NA below -15°C or above 50°C. When local altimeter setting not received use Washington altimeter setting and increase LPV DA to 272 feet; increase LNAV/VNAV DA to 345; increase all MDAs 60 feet and Circling visibility Cat D ¼ SM. For inop ALS, increase LNAV/VNAV all Cats visibility to ¾ mile and LNAV all Cats visibility to 1 mile. For inop ALS when using Washington altimeter setting, increase LNAV/VNAV all Cats visibility ½ SM, and LNAV visibility Cat A/B ¼ SM. Rwy 20 helicopter visibility reduction below ¾ SM NA.

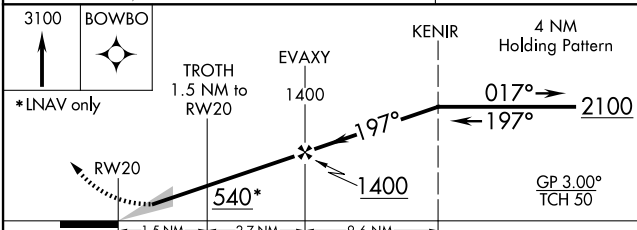
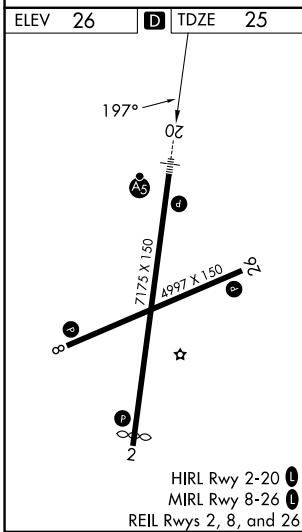
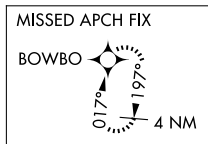
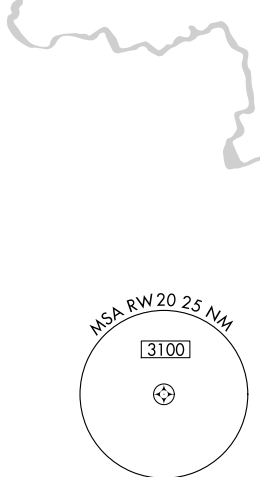
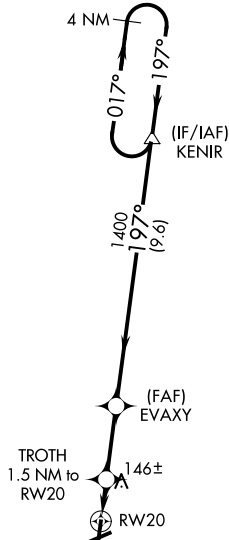
MALSRL



MISSED APPROACH:
Climb to 3100 direct BOWBO and hold, continue climb-in-hold to 3100.

AWOS-3 128.425	WASHINGTON CENTER 123.85 279.65	UNICOM 122.8 (CTAF) 0
--------------------------	---	---------------------------------

NoPT for arrivals at KENIR on V290 southeast bound.



CATEGORY	A	B	C	D
LPV DA		231-½	205 (300-½)	
LNAV/VNAV DA		304-¾	278 (300-¾)	
LNAV MDA		400-¾	374 (400-¾)	
CIRCLING	600-1 574 (600-1)	620-1 594 (600-1)	700-2 674 (700-2)	800-2½ 774 (800-2½)

SE-2, 11 JUN 2026 to 09 JUL 2026

SE-2, 11 JUN 2026 to 09 JUL 2026