

(LINSE2.LINSE) 25051

AL-5533 (FAA)

CARROLL COUNTY RGNL/JACK B POAGE FLD(DMW)
WESTMINSTER, MARYLAND

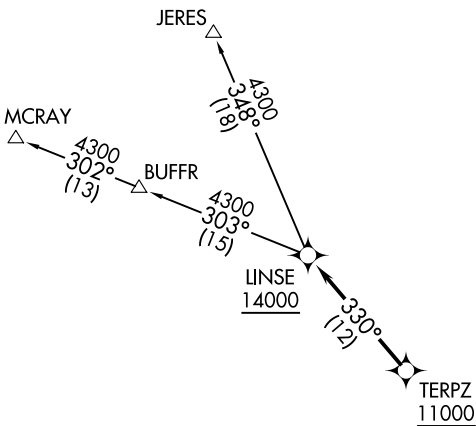
LINSE TWO DEPARTURE (RNAV)

POTOMAC DEP CON
125.525 291.625
AWOS-3
121.25

RNAV 1 - DME/DME/IRU or GPS.

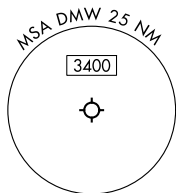
RADAR required.

TOP ALTITUDE:
16000



NE-3, 11 JUN 2026 to 09 JUL 2026

NE-3, 11 JUN 2026 to 09 JUL 2026



NOTE: Jet aircraft only.

TAKEOFF MINIMUMS:

Rwy 16: 400-2¾ or standard with minimum climb of 225'/NM to 1300.

Rwy 34: Standard.

NOTE: Chart not to scale.



DEPARTURE ROUTE DESCRIPTION

Climb on assigned heading for RADAR vectors to cross TERPZ at or above 11000, thence....

...then on track 330° to cross LINSE at or above 14000. Then on assigned transition. Maintain 16000, expect filed altitude 10 minutes after departure.

JERES TRANSITION (LINSE2.JERES)

MCRAY TRANSITION (LINSE2.MCRAY)

LINSE TWO DEPARTURE (RNAV)

CARROLL COUNTY RGNL/JACK B POAGE FLD(DMW)
WESTMINSTER, MARYLAND

(LINSE2.LINSE) 20FEB25