

(TERPZ8.TERPZ) 24193

AL-5533 (FAA)

CARROLL COUNTY RGNL/JACK B POAGE FLD(DMW)
WESTMINSTER, MARYLAND

TERPZ EIGHT DEPARTURE (RNAV)

POTOMAC DEP CON
125.525 291.625
AWOS-3
121.25
UNICOM
122.7 (CTAF)

RNAV 1 - DME/DME/IRU or GPS.

RADAR required.

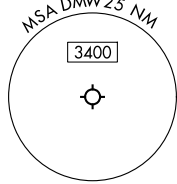
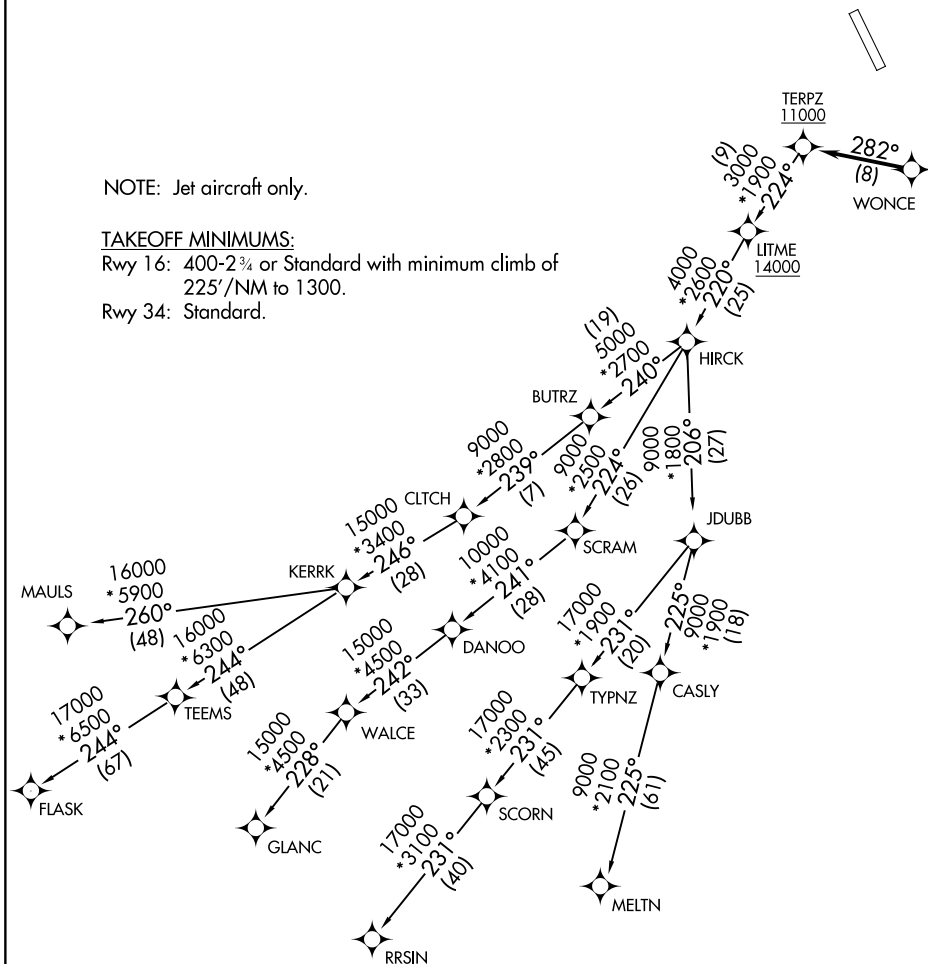
**TOP ALTITUDE:
17000**

NOTE: Jet aircraft only.

TAKEOFF MINIMUMS:

Rwy 16: 400-2¾ or Standard with minimum climb of
225'/NM to 1300.

Rwy 34: Standard.



NOTE: Chart not to scale.

NE-3, 11 JUN 2026 to 09 JUL 2026

NE-3, 11 JUN 2026 to 09 JUL 2026

TERPZ EIGHT DEPARTURE (RNAV) CARROLL COUNTY RGNL/JACK B POAGE FLD(DMW)
WESTMINSTER, MARYLAND

(TERPZ8.TERPZ) 11JUL24



DEPARTURE ROUTE DESCRIPTION

Climb on assigned heading for RADAR vectors to WONCE, thence. . . .

. . . then on track 282° to cross TERPZ at or above 11000, then on assigned transition.
Maintain 17000, expect filed altitude 10 minutes after departure.

CLTCH TRANSITION (TERPZ8.CLTCH)

FLASK TRANSITION (TERPZ8.FLASK)

GLANC TRANSITION (TERPZ8.GLANC)

MAULS TRANSITION (TERPZ8.MAULS)

MELTN TRANSITION (TERPZ8.MELTN)

RRSIN TRANSITION (TERPZ8.RRSIN)

NE-3, 11 JUN 2026 to 09 JUL 2026

NE-3, 11 JUN 2026 to 09 JUL 2026